

A man with short grey hair and a beard, wearing a maroon sweater, stands against a white background with faint blue geometric lines. He is holding a fan of material samples in his hands. The samples include a large red sheet, a blue sheet, a light wood-grain sheet, a white sheet, and a dark grey sheet.

trotec

Laser and Rotary Materials 2021

valid from 11/2021

/ SETTING NEW STANDARDS

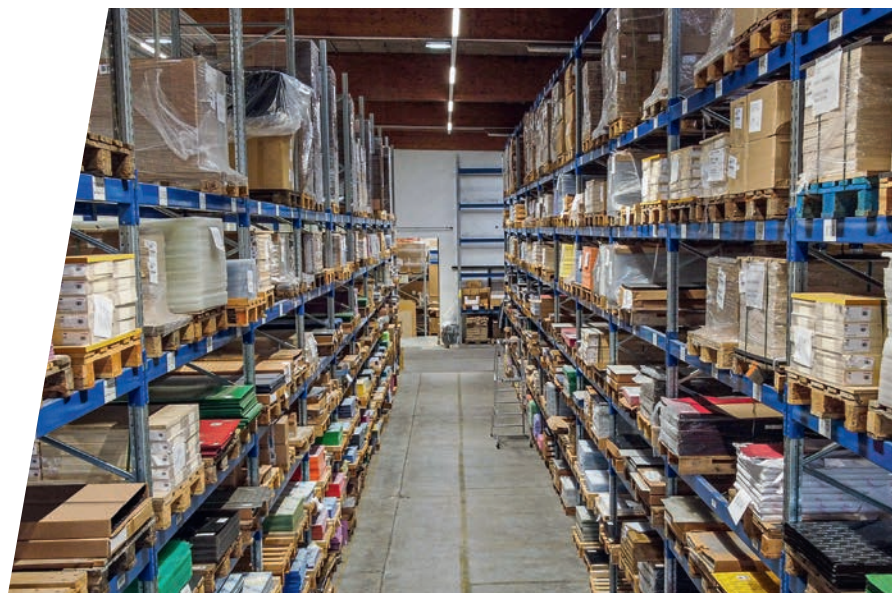


The ideal material for each application!

Trotec offers solutions for almost all requirements in the field of engraving, cutting and marking. High-quality, innovative laser system solutions as well as highest standard consumables form this outstanding portfolio. We aim to assist our customers improve profitability and productivity by supplying Trotec materials which offer superior results first time as well as, providing a one stop shop solution, allowing our clients to purchase all their products via one call or email.

We are proud to be the manufacturer of a full range of Trotec laminates that is complemented by additional high-quality products from selected suppliers. We want to make you more profitable by benefitting from these advantages:

- Engrave efficiently with fewer passes
- Low residue exposed while engraving
- No sticky edges after laser cutting
- Minimal cleaning required
- Consistency in quality and colours
- Highly durable materials



***Please note that pricing may be subject to change without notice.
All pricing is EX-GST**

20211027

How to Read this Catalogue

Sheet sizes & tolerances:

Sheet sizes are indicated in each product group description. Note: Minor dimension/ colour deviations can occur per batch (production-related).

When ordering full sheets, please consider the following tolerances:

TroLase, TroLase Metallic, TroLase Metallic Plus, TroLase Reverse, TroLase ADA Signage, TroLase Thins, TroLase Textures, TroPly, TroPly Metallic Plus, TroPly Satins, TroPly Ultra, TroPly Ultra Reverse
Tolerances: width ± 1.5 mm;
length ± 3 mm

LaserWood
Tolerances: width and length: ± 1 mm
Thickness: -0.3 mm; + 0.5 mm

TroLase Lights
Tolerances: width +3 mm; -0 mm;
length +6 mm; -0 mm

TroGlass Series
Tolerances: width ± 3 mm;
length ± 3 mm
thickness (according to ISO 7823-1):
gauge 3 mm: ± 0.7 mm
gauge 4 mm: ± 0.8 mm
gauge 5 mm: ± 0.9 mm
gauge 6 mm: ± 1 mm
gauge 8 mm: ± 1.2 mm
gauge 10 mm: ± 1.4 mm
gauge 15 mm: ± 1.9 mm
gauge 20 mm: ± 2.4 mm

Icon legend



Laser material
Plastic sheets made of acrylic are perfect for laser processing (laser engraving and laser cutting).



Rotary material
This material is suitable for processing with mechanical engraving devices.



Reverse engraving
This material is engraved from the back using mirrored graphics. The engraved area can be infilled or backlit to enhance the contrast against the coloured background.



Front engraving
This material is engraved from the front side.



Exterior use
This material is UV-resistant and suitable for outdoor use. Of course, it can also be used for indoor applications.



Indoor use
This material is suitable for interior applications.



Adhesive possible
Adhesive backing can be applied on selected materials.



UV-Print-Icon
This material is especially suitable for UV/ digital printing.



Grey Icons
All symbols in grey mean that the respective application does not apply.

Cut to size legend



Cut to size
Standard:
¼ sheet
½ sheet
¾ sheet
⅓ sheet (when purchasing full sheets only)
450mm x 300mm (suitable for Rayjet 50)
1000mm x 600mm (suitable for Speedy 400)

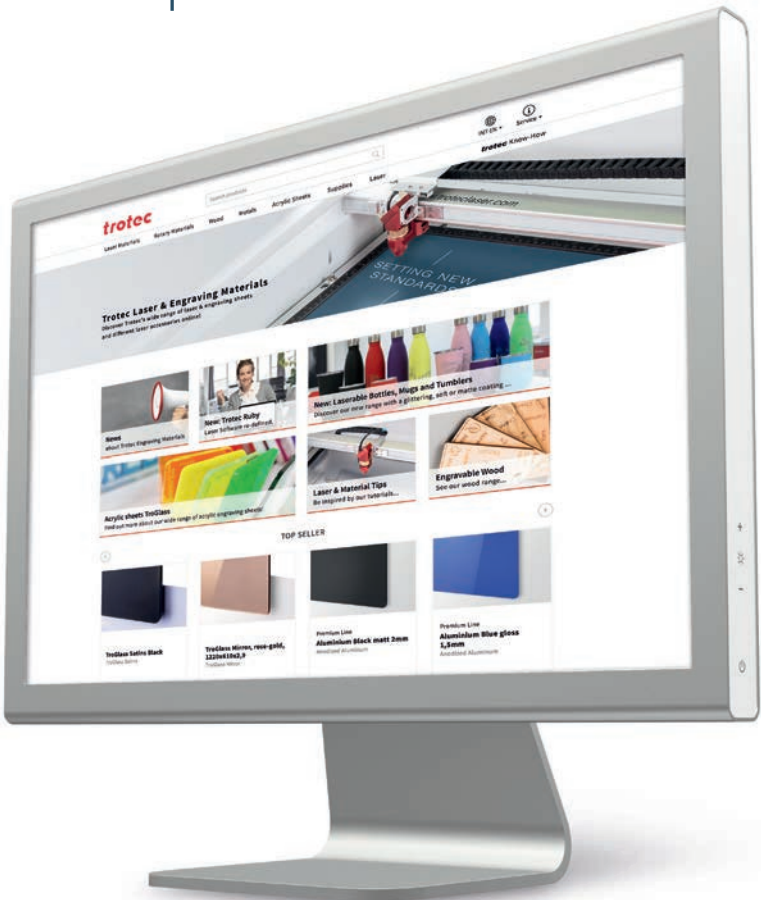
Custom Cuts:
Circle 600 diameter (when purchasing half a sheet) cutting charge \$5+gst



Order online in our engraving supplies shop

You can quickly and easily purchase our high-quality laser and engraving materials online in our webshop at www.engraving-supplies.com.au

In our webshop you will find a comprehensive assortment of products, up-to-date information about our materials, usage and processing tips, and practical sample instructions.



Save valuable time.



Have a complete overview of your online orders.



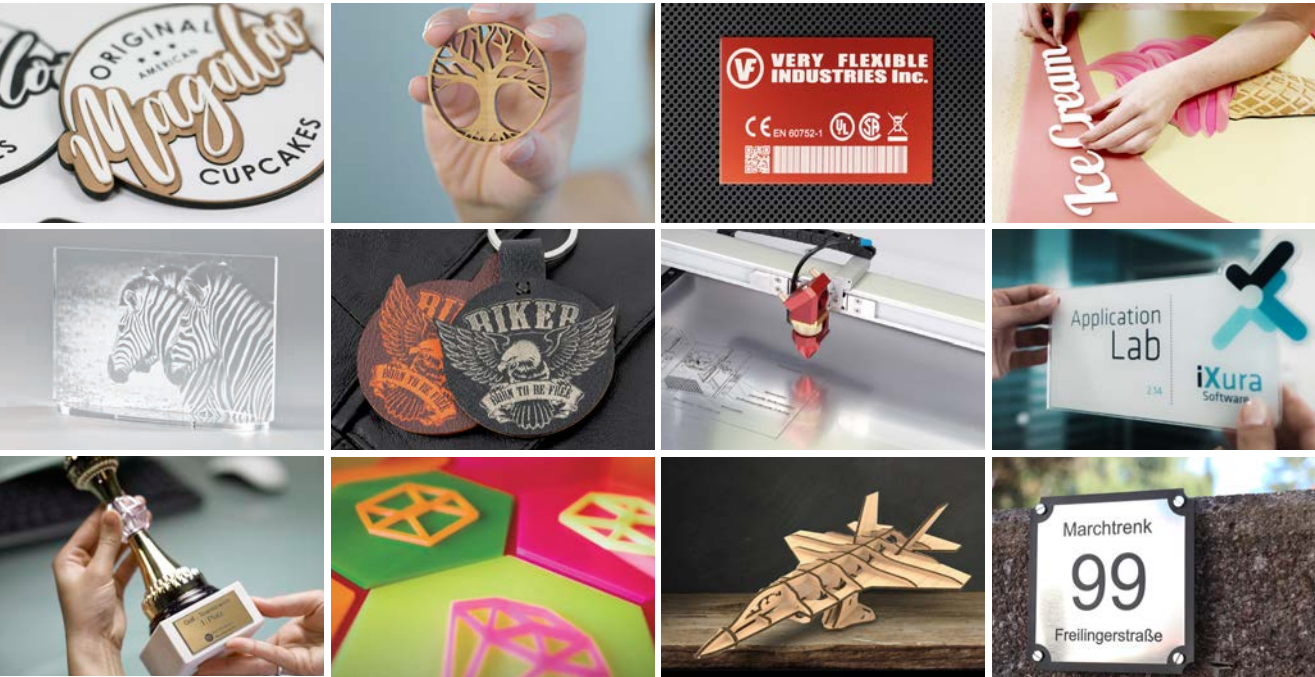
Order 24/7.



Benefit from the tips and tricks of our experts.



Learn exclusively about new products and offers.



Catalogue Contents

Plastic

Laser + Rotary

- 7 PET-G
- 8 TroLase
- 10 TroLase Metallic Plus
- 11 TroLase Metallic
- 12 TroLase Reverse
- 13 TroLase ADA Signage
- 14 TroLase Thins
- 15 TroLase Ultra
- 16 TroLase Textures
- 17 TroLase Lights
- 18 TroLase Foil
- 19 LaserFlex

Rotary

- 22 TroPly
- 24 TroPly Metallic Plus
- 25 TroPly Metallic
- 26 TroPly Ultra
- 28 TroPly Ultra Reverse

Acrylic

- 32 TroGlass Colour Gloss
- 34 TroGlass Satins
- 35 TroGlass Duo
- 36 TroGlass Neon
- 36 TroGlass Pastel
- 37 TroGlass XT
- 38 TroGlass Reverse
- 39 TroGlass Clear
- 40 TroGlass Mirror
- 41 TroGlitter

Metal

- 42 Anodised Aluminium
- 43 DuraBlack®
- 44 AlumaMark®

Wood

- 50 Solid Wood
- 51 Wood Veneer
- 51 Natural Wood Veneer
- 52 Poplar Plywood
- 53 MDF
- 53 Balsa
- 54 TroCraft Eco
- 55 LaserCork

Paper

- 58 LaserPaper Colours
- 59 LaserPaper Wood

Gifts

- 62 Leatherette
- 63 Accessories and Frames
- 65 Laserable bottles and Tumblers

Supplies

- 68 Laser Marking Solutions
- 69 How to use laser marking solutions
- 70 Trodat Stamps and Seals
- 70 Laser Rubber Sheets
- 71 Advertising materials
- 72 Colour Fillings
- 72 Workholding Mat
- 73 Pins and Magnets

Service

- 2 Icon description
- 74 Machine Accessories
- 75 Trotec Laser Machines

TroLase Series

Trotec's laserable plastics are specifically designed for high-performance laser and rotary engraving. They have a micro surfaced coating on a high-quality extruded core, which allows for detailed engravings at a high production speed. Materials are combined with a low residue characteristic, which distinctly reduces your overall processing time and increases productivity. All products are carefully tested and optimised for your cost-saving, high-quality daily use. Our quality makes you more efficient and profitable. Within the Trotec laser and rotary materials portfolio, you will find a wide range of various colours, effects, gauges and wear and tear characteristics suitable for almost any application.



Here you can find the entire Trolase series
in the Trotec webshop.
Scan QR Code now and order online.

PET-G



Material Features

Material: PETG
Finish: gloss
Engraving depth: 0.25 mm
Cutting method: laser, saw, guillotine
Sheet size: 1/4 1200 x 600 mm

Our PETG sheets are suitable for making protective face shields and stencils. Perfect for very fine laser cutting detail.

- Clear PET film for cutting only
- Sheet size: 1200mm x 600mm
- Thickness: 0.25mm
- Only available in full sheet (however we will cut to half and quarter sheets)

Cut to size service



Clear
0.25 163979



We have compiled a variety of files for COVID-19 protective elements for you including protective face shields, face masks and information signs all available on our website www.troteclaser.com.au

Please note: these parts do not offer one hundred percent protection against infections, but they can serve as an alternative. Furthermore, these designs are not certified.

TroLase



Material Features

Material: modified acrylic, colour coated, 2 ply / 3 ply

Finish: matte, gloss

Engraving depth: 0.08 mm

Cutting method: laser, saw, guillotine

Sheet size: $\frac{1}{1}$ 1200 x 600mm
 $\frac{1}{2}$ 600 x 600 mm
 $\frac{1}{4}$ 600 x 300mm

- UV-resistant, acrylic based material
- Detailed engraving at high production speed
- Superior composition minimises residue and reduces need for cleaning
- Ideal for interior and exterior signs, badges, trophy plates, industrial signs

Cut to size service



White/Red
0.8 L206-203
86585
1.6 L206-206
71584
3.2 L206-209
86591



White/Blue
1.6 L205-206
71565



White/Black
0.8 L204-203
86561
1.6 L204-206
71546
3.2 L204-209
71549



Red/White
0.8 L602-203
86565
1.6 L602-206
71828
3.2 L602-209
71831



Blue/White
0.8 L512-203
86581
1.6 L512-206
71782
3.2 L512-209
86582



Black/White
0.8 L402-203
86563
1.6 L402-206
71747
3.2 L402-209
71750



Burgundy/White
1.6 L622-206
71852



Sky Blue/Yellow
1.6 L517-206
132759



Smoke Grey/White
1.6 L312-206
71614



Orange/White
0.8 L612-203
86564
1.6 L612-206
71841



Sapphire/White
0.8 L502-203
86594
1.6 L502-206
71772



Dark Brown/White
1.6 L842-206
71909

	Red/Black 1.6 L604-206 71835		Navy Blue/White 1.6 L552-206 71796		English Walnut/White 1.6 L192-206 71515
	Pink/Black 1.6 L664-206 86593		Blueberry/White 1.6 L542-206 101807		Black/Red 1.6 L406-206 71756
	Pink/White 1.6 L664-206 86588		Purple/White 0.8 L582-203 111628 1.6 L582-206 71804		Black/Silver 1.6 L413-206 86587
	Blush Pink/White 0.8 L672-203 149103 1.6 L672-206 149104		Green/White 0.8 L932-203 86596 1.6 L932-206 71946 3.2 L932-209 91696		Gloss Black/White 1.6 L422-206 86580
	Yellow/Red 1.6 L706-206 86590		Celadon Green/White 1.6 L972-206 71955		Black/Gold 1.6 L417-206 71759
	Yellow/Black 0.8 L704-203 86562 1.6 L704-206 71864 3.2 L704-209 86566		Evergreen/White 0.8 L912-203 86586 1.6 L912-206 71937 3.2 L912-209 86592		Gloss Black/Gold 1.6 L427-206 86589
	Powder Blue/White 0.8 L522-203 149101 1.6 L522-206 149102		Dark Walnut/White 1.6 L002-206 71512		Almond/Black 1.6 L854-206 71911
	Light Blue/White 1.6 L562-206 71800				
3 Ply					
	White/Black/White 1.6 L204-306 91640 3.2 L204-309 91644		Black/White/Black 3.2 L402-309 91645		

TroLase Metallic Plus



Material Features

Material: modified acrylic, colour coated, 2 ply

Finish: brushed metal

Engraving depth: 0.08 mm

Cutting method: laser, saw, guillotine

Sheet size:

$\frac{1}{1}$	1200 x 600 mm
$\frac{1}{2}$	600 x 600 mm
$\frac{1}{4}$	600 x 300 mm

- Acrylic based material with an authentic metallic finish
- Thin top layer enables detailed engraving at high production speed
- Cost-effective, time-saving alternative to metal engraving
- Suitable for outdoor use, signs, badges, trophy plates, safety signs, funeral plates

Cut to size service



Brushed Stainless Steel/Black

0.8 [LMT+314-203](#)
[87112](#)

1.6 [LMT+314-206](#)
[71615](#)

3.2 [LMT+314-209](#)
[87106](#)



Brushed Bright Nickel/Black

1.6 [LMT+364-206](#)
[87116](#)

3.2 [LMT+364-209](#)
[87135](#)

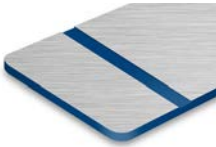


Brushed Copper/Black

0.8 [LMT+864-203](#)
[87136](#)

1.6 [LMT+864-206](#)
[87114](#)

3.2 [LMT+864-209](#)
[87141](#)



Brushed Stainless Steel/Blue

0.8 [LMT+315-203](#)
[87137](#)

1.6 [LMT+315-206](#)
[87117](#)

3.2 [LMT+315-209](#)
[87139](#)



Brushed Stainless Steel/Red

0.8 [LMT+316-203](#)
[87145](#)

1.6 [LMT+316-206](#)
[87118](#)

3.2 [LMT+316-209](#)
[87146](#)



Brushed Gold/Black

0.8 [LMT+764-203](#)
[87115](#)

1.6 [LMT+764-206](#)
[71893](#)

3.2 [LMT+764-209](#)
[87108](#)

TroLase Metallic



Material Features

Material: modified acrylic, colour coated, 2 ply

Finish: brushed metal, smooth

Engraving depth: 0.08 mm

Cutting method: laser, saw, guillotine

Sheet size:

1/1	1200 x 600 mm
1/2	600 x 600 mm
1/4	600 x 300 mm

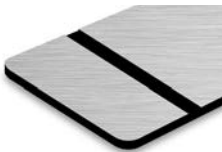
- Acrylic based laminate
- Authentic metallic finish
- Enables detailed engraving
- For interior signs, badges, trophy plates, safety signs or funeral plates

Cut to size service



Smooth Gold/Black

0.8 LMT714-203
86661
1.6 LMT714-206
86599
3.2 LMT714-209
86662



Brushed Aluminium/Black

0.8 LMT354-203
86632
1.6 LMT354-206
71700
3.2 LMT354-209
86634



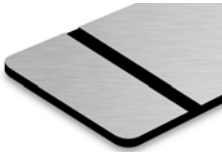
Brushed Copper/Black

0.8 LMT894-203
86660
1.6 LMT894-206
71931



Brushed Gold/Black

0.8 LMT734-203
86602
1.6 LMT734-206
71881
3.2 LMT734-209
92076



Brushed Silver/Black

0.8 LMT334-203
86619
1.6 LMT334-206
71625
3.2 LMT334-209
86658



Brushed Deep Bronze/Black

1.6 LMT884-206
86648



European Gold/Black

0.8 LMT754-203
86600
1.6 LMT754-206
71889
3.2 LMT754-209
86649



Smooth Silver/Black

0.8 LMT344-203
86598
1.6 LMT344-206
86597
3.2 LMT344-209
86656

TroLase Reverse



Material Features

Material: modified acrylic, reverse colour coated, 2 ply

Finish: matte, gloss (gold and silver), brushed

Engraving depth: 0.08 mm

Cutting method: laser, saw

Sheet size:

1/1	1200 x 600 mm
1/2	600 x 600 mm
1/4	600 x 300 mm

- Transparent acrylic fascia with a coloured coating on the reverse side
- Mirror-inverted engraving on the reverse side
- Fill engraved area with your choice of acrylic paint
- Perfect for multi-coloured interior and exterior signs, safety signs, promotional and display signage

Cut to size service



Matte/Red
1.6 LR601-206
71810



Matte/Burgundy
1.6 LR621-206
71849



Gloss/Silver
1.6 LR340-206
71630



Matte/Blue
1.6 LR511-206
71773



Matte/Black
0.5 LR401-202
129011
1.6 LR401-206
71732



Matte/Silver
1.6 LR341-206
71632



Matte/Navy Blue
1.6 LR551-206
71793



Matte/Dark Brown
1.6 LR841-206
71905



Matte/Gold
1.6 LR711-206
71873



Matte/Green
1.6 LR931-206
86556



Matte/Yellow
1.6 LR701-206
71853



Gloss/Gold
1.6 LR710-206
71872



Matte/Ivory
1.6 LR221-206
86557



Matte/White
0.5 LR201-202
129010
1.6 LR201-206
71521



Brushed/Silver
1.6 LR351-206
71684

TroLase ADA Signage



Material Features

Material: modified acrylic, 1 ply

Finish: matte

Cutting method: laser, saw, guillotine

Sheet size:

$\frac{1}{1}$	1200 x 600mm
$\frac{1}{1}^*$	1220 x 610 mm
$\frac{1}{2}$	600 x 600 mm
$\frac{1}{4}$	600 x 300 mm

- Solid, dyed, acrylic based material for indoor and outdoor use
- Popular material for the production of braille and tactile signage
- Ideal for cutting out letters and for creating 3-dimensional signs
- Thinner options are a popular medium for architectural model making

Cut to size service



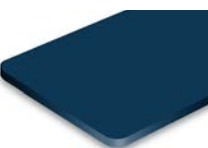
Red

0.8 [LS601-103](#)
[71806](#)
1.6 [LS601-106](#)
[71807](#)
3.2 [LS601-109](#)
[86532](#)



Blue

0.8 [LS501-103](#)
[71767](#)
1.6 [LS501-106](#)
[71768](#)
3.2 [LS501-109](#)
[86534](#)



Marine Blue*

1.6 [LS502-106](#)
[86514](#)



Black

0.8 [LS401-103](#)
[71727](#)
1.0 [LS401-104](#)
[86504](#)
1.6 [LS401-106](#)
[71729](#)
3.2 [LS401-109](#)
[71730](#)



Bright White

0.8 [LS204-103](#)
[71526](#)
1.0 [LS204-104](#)
[86412](#)
1.6 [LS204-106](#)
[71527](#)
3.2 [LS204-109](#)
[71528](#)



White*

0.8 [LS201-103](#)
[71519](#)
1.0 [LS201-104](#)
[86411](#)
1.6 [LS201-106](#)
[86506](#)



Light Grey

0.8 [LS305-103](#)
[86522](#)
1.6 [LS305-106](#)
[86513](#)



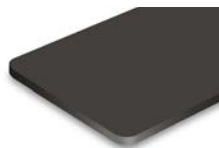
Silver

0.8 [LS304-103](#)
[86517](#)
1.6 [LS304-106](#)



Yellow

1.6 [LS701-106](#)
[86526](#)



Charcoal Grey

0.8 [LS307-103](#)
[71600](#)



Clear

0.5 [LS101-102](#)
0.8 [LS101-103](#)
[71505](#)
1.6 [LS101-106](#)
[71507](#)



Green

1.6 [LS901-106](#)
[86523](#)
3.2 [LS901-109](#)
[126542](#)



Burgundy

1.6 [LS602-106](#)
[71812](#)

TroLase Thins



Material Features

Material: modified acrylic, colour coated, 1 ply / 2 ply

Finish: matte, gloss, brushed metal

Engraving depth: 0.08 mm

Cutting method: laser, saw, guillotine

Sheet size:

1/1	1200 x 600 mm
1/2	600 x 600 mm
1/4	600 x 300 mm

- Extremely flexible and ideally suited for curved surfaces
- Acrylic base and thin foiled surface enable detailed engravings
- Elegant engravings for interior signs, badges, trophy and award plates as well as industrial signage
- Solid single ply white and black options are a proven medium for 3D model makers

Cut to size service



Brushed Gold/Black
0.5 LT734-202
86537



Brushed Copper/Black
0.5 LT894-202
71927



Yellow/Black
0.5 LT744-202
71854



European Gold/Black
0.5 LT754-202
71885



Brushed Silver/Black
0.5 LT334-202
86544



Red/White
0.5 LT602-202
71814



Trophy Gold/Black
0.5 LT794-202
86539



Trophy Silver/Black
0.5 LT394-202
86541



Blue/White
0.5 LT512-202
71774



Brushed Bronze/Black
0.5 LT874-202
91643



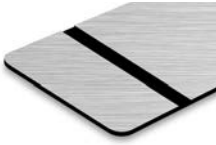
Smooth Silver/Black
0.5 LT344-202
86543



Black/White
0.5 LT402-202
71735




Deep Bronze/Black
0.5 LT884-202
71917




Brushed Aluminium/Black
0.5 LT354-202
71688




White/Black
0.5 LT204-202
71529




Gloss Black/
0.5 LT427-202
 71763




Gloss Black/
0.5 LT423-202
 71760




Black/Gold
0.5 LT417-202
 71757




Black/Silver
0.5 LT413-202
 91642



Celestial Blue/Gold
0.5 LT577-202
 86540




Port Wine/Gold
0.5 LT677-202
 86552




Purple/White
0.5 LT582-202
 86553

1 ply




White single ply
0.5 LT202-102
 86542



Black single ply
0.5 LT404-102
 86545

TroLase Ultra



Material Features

Material: impact modified acrylic, colour coated, 2 ply

Finish: matte


Engraving depth: 0.16 mm


Cutting method: laser, saw, guillotine

Sheet size:


1/1	1200 x 600 mm
1/2	600 x 600 mm
1/4	600 x 300 mm

- 5 year UV-resistant, acrylic based material
- Strong top coat offering scratch resistance
- Superior composition minimises residue and reduces need for cleaning
- Ideal for interior and exterior signs
- Suitable for rough environments







Yellow/Black
1.5 LU704-205
 145208




Green/White
1.5 LU932-205
 145207




White/Black
1.5 LU204-205
 145204



Red/White
1.5 LU602-205
 145206



Blue/White
1.5 LU502-205
 145205



Black/White
1.5 LU402-205
 145208

TroLase Textures



Material Features

Material: modified acrylic (core and cap), 1 ply / 2 ply

Finish: textured matte

Engraving depth: 0.18 mm

Cutting method: laser, saw, guillotine

Sheet size:

$\frac{1}{1}$	1200 x 600 mm
$\frac{1}{2}$	600 x 600 mm
$\frac{1}{4}$	600 x 300 mm

- Extra durability and scratch resistance due to textured acrylic cap
- Textured, matte surface is non-reflective and easy to clean
- UV- and weather-resistant material for demanding environments
- Ideal for industrial applications, signs in harsh environments, safety signs, control panels

Cut to size service



Red/White

1.6 LTX642-206
87322

3.2 LTX642-209
87355



Royal Blue/White

1.6 LTX592-206
87323

3.2 LTX592-209
87340



Black/White

1.6 LTX422-206
87326

3.2 LTX422-209
87346



White/Red

1.6 LTX246-206
87339



White/Blue

1.6 LTX205-206
87347



White/Black

1.6 LTX244-206
87316

3.2 LTX244-209
87344



Yellow/Black

1.6 LTX774-206
87330



Sapphire/White

1.6 LTX503-206
87331



Ash Grey/Black

1.6 LTX374-206
87341



Green/White

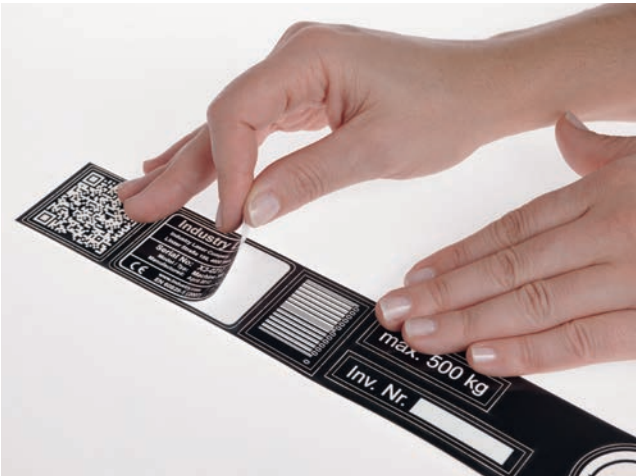
1.6 LTX962-206
87338



Transparent

1.6 LTX101-106
111626

TroLase Lights



Material Features

Material: PET-foil. 2 ply
Finish: gloss, brushed metal
Engraving depth: 0.04 mm
Cutting method: laser, guillotine
Sheet size: 600 x 300 mm

- Highly flexible and robust film with an adhesive coating on the reverse
- Adheres perfectly to various materials such as metals, plastic, rubber, and wood
- Popular material in industry and commerce
- Perfect for labels, stickers, badges as well as for trophy plates

Cut to size service



Smooth Gold/Black
0.1 LL74-201
71875



Brushed Silver/Black
0.1 LL63-201
71621



White/Black
0.1 LL62-201
71531



Brushed Brass/Black
0.1 LL64-201
71891



Smooth Silver/Black
0.1 LL73-201
71641



Yellow/Black
0.1 LL68-201
86554



Brushed Bronze/Black
0.1 LL69-201
71919



Black/Silver
0.1 LL75-201
71762



Black/White
0.1 LL61-201
71738



Black/Gold
0.1 LL65-201
71765



Blueberry/White
0.1 LL52-201
134778



Red/White
0.1 LL66-201
134777



Purple/White
0.1 LL82-201
134780



Blush Pink/White
0.1 LL67-201
134781



Powder Blue/White
0.1 LL70-201
134792



Grey/White
0.1 LL32-201
134779

TroLase Foil



Material Features

Material: modified acrylic foil, 2 ply
Finish: matte, gloss, metallic
Engraving depth: 0.04 mm
Cutting method: laser, guillotine
Sheet size: 600 x 300 mm

- Thin, two-layer, flexible engraving material featuring a micro surfaced coating on an acrylic core
- It comes with an adhesive backing and is UV stable
- Allows for special editing options, such as kiss-cutting, to simplify the work process
- Ideal for trophy and industrial labeling, functional signage and custom stickers



Cut to size service



White/Black
0.2 139687



Green/White
0.2 139691



Gold brushed/Black
0.2 139695



Red/White
0.2 139688



Yellow/Black
0.2 139692



Copper brushed/Black
0.2 139696



Blue/White
0.2 139689



Stainless steel
0.2 139693



Black matte/White
0.2 139685



Light blue/White
0.2 139690



Nickel brushed/Black
0.2 139694



Black glossy/White
0.2 139686

LaserFlex



Material Features

Material: polyurethan foil on transfer film

Finish: matte

Engraving depth: 0.04 mm

Cutting method: laser, guillotine

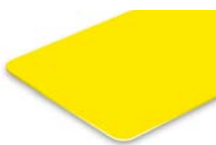
Sheet size: 420 x 297 mm (A3)

- Suited for customising textiles
- Finest details with intricate motifs can be achieved
- To be applied to textiles using a transfer press
- Ideal for T-shirts, fabric bags, cotton, polyester, blended fabrics
- Less suitable for nylon and coated textiles

Cut to size service



White
0.1 LF200



Yellow
0.1 LF710



Orange
0.1 LF612



Red
0.1 LF600



Blue
0.1 LF500



Marine Blue
0.1 LF551



Green
0.1 LF931



Black
0.1 LF400



LaserFlex has been specially designed to not only be cut but also to be weeded by laser. This means that it is no longer necessary to mechanically remove excess material between graphics and letters or along edges.

Recommended transfer conditions:

- Temperature: 175 °C
- Duration: 60 seconds

LaserFlex film can be washed at up to 60 °C. Any residues can be removed by washing.

TroPly Series*

Our rotary engraving materials features a range of products for multiple applications. Product properties range from thin surfaces for intricate detail engraving up to strong, robust surfaces used in more demanding environments. Some of Trotec's TroPly materials also have a reflective-free surface, which allows for clear and easy-to-read designs to be created from even the smallest engraved images.

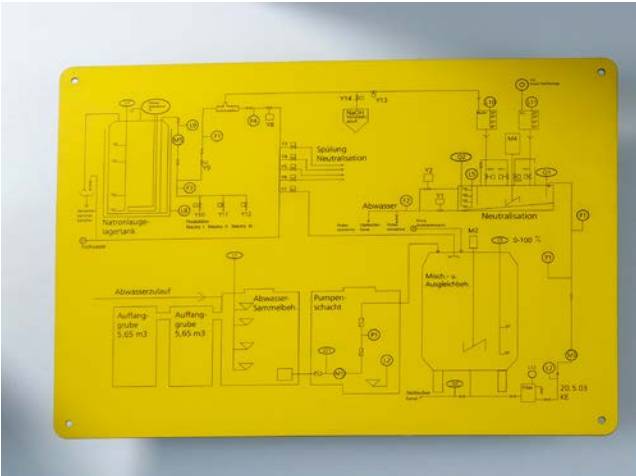
**Not suitable for laser processing*



Here you can find the entire TroPly series in the Trotec webshop. Scan QR Code now and order online.



(Not suitable for use on laser)



Material Features

Material: ABS, 2 ply / 3 ply
Finish: matte
Engraving depth: 0.08 mm
Cutting method: saw
Sheet size: $\frac{1}{1}$ 1200 x 600 mm
 $\frac{1}{2}$ 600 x 600 mm
 $\frac{1}{4}$ 600 x 300 mm

- Features a thin surface coating
- The reflection-free surface allows clear and easy-to-read designs
- An ideal choice for an array of interior applications, particularly when a high degree of detail is required
- Perfect for information and safety signs, trophy plates as well as for badges

Cut to size service



White/Red
1.6 P206-206



Yellow/Black
0.8 P744-203
1.6 P744-206
2.4 P744-207



White/Black
0.8 P204-203
1.6 P204-206
2.4 P204-207



Red/White
0.8 P602-203
1.6 P602-206
2.4 P602-207



Blue/White
0.8 P512-203
1.6 P512-206
2.4 P512-207



Black/White
0.8 P402-203
1.6 P402-206
2.4 P402-207



Burgundy/White
0.8 P622-203
1.6 P622-206
2.4 P622-207



Blue/Bright White
1.6 P572-206



White/Pine Green
1.6 P269-206



Red/Bright White
0.8 P642-203



Navy Blue/White
1.6 P552-206



White/Blue
1.6 P205-206
2.4 P205-207



Orange/White
0.8 P612-203
1.6 P612-206



Bright Green/White
0.8 P932-203
1.6 P932-206
2.4 P932-207



Ivory/Dark Brown
1.6 P228-206



Yellow/Red
1.6 P706-206



Ever Green/White
1.6 P912-206
2.4 P912-207



Almond/Black
0.8 P854-203
1.6 P854-206
2.4 P854-207



Purple/White
0.8 P582-203
1.6 P582-206



Medium Brown/White
1.6 P822-206



Smoke Grey/White
0.8 P312-203
1.6 P312-206
2.4 P312-207



Pink/White
1.6 P662-206



Dark Brown/White
1.6 P842-206



Light Grey/Black
1.6 P324-206



Pink/Black
1.6 P664-206



Dark Walnut/White
1.6 P002-206



White/Green
1.6 P209-206



Light Blue/White
1.6 P562-206



Sapphire/White
1.6 P502-206
2.4 P502-207



Black/Bright White
1.6 P412-206



Black/White/Black
3.2 P402-309



Red/White/Red
3.2 P602-309



White/Black/White
3.2 P204-309



Blue/White/Blue
3.2 P512-309

TroPly Metallic Plus

(Not suitable for use on laser)



Material Features

- Material:** ABS, 2 ply
Finish: brushed and smooth metal
Engraving depth: 0.08 mm
Cutting method: saw, guillotine
- Sheet size:**
- | | |
|-----|--------------|
| 1/1 | 1200x 600 mm |
| 1/2 | 600 x 600 mm |
| 1/4 | 600 x 300 mm |
- Metallic effect laminate with a scratch resistant top coating
 - Features a special protective layer
 - Particularly resistant to scratches and wear
 - Suitable for trophy and funeral plates, information and interior signs

Cut to size service



Brushed Gold/Black
1.6 PMT+734-206
2.4 PMT+734-207



Brushed Silver/Black
1.6 PMT+334-206



Smooth Silver/Black
1.6 PMT+344-206



Brushed European Gold/Black
1.6 PMT+754-206
2.4 PMT+754-207



Smooth Gold/Black
1.6 PMT+714-206
2.4 PMT+714-207



Brushed Aluminium/Black
1.6 PMT+354-206
2.4 PMT+354-207



Brushed Copper/Black
1.6 PMT+894-206



Deep Bronze/Black
1.6 PMT+884-206

TroPly Metallic

(Not suitable for use on laser)



Material Features

Material: ABS, 2 ply
Finish: brushed and smooth metal
Engraving depth: 0.08 mm
Cutting method: saw, guillotine
Sheet size: $\frac{1}{1}$ 1200 x 600 mm
 $\frac{1}{2}$ 600 x 600 mm
 $\frac{1}{4}$ 600 x 300 mm

- Characterised by a precious metal look
- Provides the lustre of a real metal with a contrasting core
- The foil surface enables fine line detail and cost effective processing
- Perfect for trophies, gifts and awards

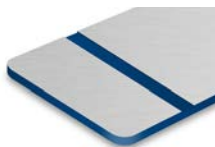
Cut to size service



Brushed Gold/Black
0.8 PMT734-203
1.6 PMT734-206



Brushed Silver/Black
0.8 PMT334-203
1.6 PMT334-206



Brushed Aluminium/Blue
1.6 PMT325-206



Brushed Europ. Gold/Black
0.8 PMT754-203
1.6 PMT754-206



Smooth Silver/Black
0.8 PMT344-203



Brushed Copper/Black
0.8 PMT894-203



Smooth Gold/Black
0.8 PMT714-203
1.6 PMT714-206



Brushed Aluminium/Black
0.8 PMT354-203
1.6 PMT354-206



Brushed Bronze/White
1.6 PMT872-206



Brushed Gold/Blue
1.6 PMT725-206

TroPly Ultra

(Not suitable for use on laser)



Material Features

Material: multi surface impact acrylic, 2 ply / 3 ply

Finish: matte, gloss

Engraving depth: 0.30 mm

Cutting method: saw

Sheet size:

$\frac{1}{1}$	1200 x 600 mm
$\frac{1}{2}$	600 x 600 mm
$\frac{1}{4}$	600 x 300 mm

- Acrylic laminate for internal and external applications
- Ideal solution for harsh environment with a thicker cap
- This thicker cap offers resistance to abrasion
- Perfect for external professional signage, plant labels and safety signs

Cut to size service



matte



White/Red
1.6 [PU206-206](#)
[91723](#)
3.2 [PU206-209](#)
[91736](#)



Blue/White
1.6 [PU512-206](#)
[91725](#)
3.2 [PU512-209](#)
[91734](#)



White/Black
1.6 [PU204-206](#)
[91715](#)
3.2 [PU204-209](#)
[91730](#)



Red/White
1.6 [PU602-206](#)
[91716](#)
3.2 [PU602-209](#)
[91733](#)



Sapphire/White
1.6 [PU562-206](#)
[91721](#)



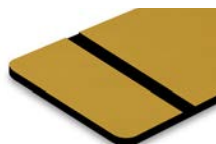
Black/White
1.6 [PU402-206](#)
[91718](#)
3.2 [PU402-209](#)
[91731](#)



Ruby/White
3.2 [PU632-209](#)
[91735](#)



Yellow/Black
1.6 [PU704-206](#)
[91726](#)
3.2 [PU704-209](#)
[91738](#)



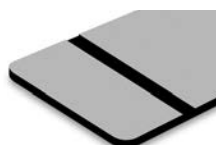
Vintage Gold/Black
1.6 [PU774-206](#)
[91720](#)



Bright Green/White
1.6 [PU932-206](#)
[91724](#)



Safety Yellow/Black
1.6 [PU794-206](#)
[91719](#)



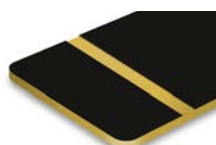
Vintage Silver/Black
1.6 [PU384-206](#)
[91717](#)
3.2 [PU384-209](#)
[91737](#)



Hunter Green/White
1.6 [PU992-206](#)
[91728](#)



White/Blue
1.6 [PU205-206](#)
[91727](#)



Black/Gold
1.6 [PU417-206](#)
[91729](#)



Alpine White/Black
1.6 [PU234-206](#)
3.2 [PU234-209](#)

gloss



Red/White
1.6 PH602-206
91793
3.2 PH602-209
91813



White/Black
1.6 PH204-206
91790
3.2 PH204-209
91811



Vintage-Silver/Black
1.6 PH384-206
91794
3.2 PH384-209
91812



Black/White
1.6 PH402-206
91791
3.2 PH402-209
91816



Safety Yellow/Black
1.6 PH794-206
91795
3.2 PH794-209
91823



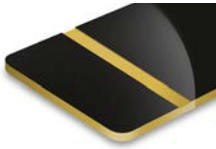
Vintage-Gold/Black
1.6 PH774-206
91792
3.2 PH774-209
91815



White/Red
1.6 PH206-206
91799
3.2 PH206-209
91819



Blue/White
1.6 PH512-206
91797
3.2 PH512-209
91822



Black/Gold
1.6 PH417-206
91805



Green/White
1.6 PH932-206
91803
3.2 PH932-209
91824



Sapphire/White
1.6 PH562-206
91796



Polar White/Black
1.6 PH234-206
3.2 PH234-209



Pine Green/White
1.6 PH962-206
91800



White/Blue
1.6 PH205-206
91798



Yellow/Black
1.6 PH704-206
91806
3.2 PH704-209
91817

3 ply (both sides gloss)



Red/White/Red
1.6 PH602-306
91808



White/Black/White
1.6 PH204-306
91804
3.2 PH204-309
91820



Black/White/Black
3.2 PH402-309
91818

TroPly Ultra Reverse

(Not suitable for use on laser)



Material Features

Material: Laminated impact acrylic, 1 ply / 2 ply

Finish: matte, gloss

Engraving depth: 0.30 mm

Cutting method: saw

Sheet size:

1/1	1220 x 610 mm
1/2	610 x 610 mm
1/4	610 x 305 mm

- Transparent acrylic glass with a coating on the back
- A transparent image is created by engraving the coloured back, which can then be filled with different colours
- UV stable and weather-proof material
- Suitable for indoor and outdoor use

Cut to size service



matte



Matte/White
1.6 PUR201-206
3.2 PUR201-209



Matte/Yellow
1.6 PUR701-206●



Matte/Green
1.6 PUR911-206●



Matte/Vintage Silver
1.6 PUR371-206



Matte/Sapphire
1.6 PUR561-206



Matte/Black
1.6 PUR401-206
3.2 PUR401-209



Matte/Gold
1.6 PUR731-206●



Matte/Blue
1.6 PUR511-206●



Matte/Red
1.6 PUR601-206●



Clear single ply
0.8 PUR101-103
1.0 PUR101-104
1.6 PUR101-106
3.2 PUR101-109



Matte/Airforce Blue
1.6 PUR541-206●



Matte/Burgundy
1.6 PUR631-206●

gloss



Clear/White
1.6 PHR200-206
3.2 PHR200-209



Clear/Yellow
3.2 PHR700-209



Clear/Green
1.6 PHR900-206
3.2 PHR900-209



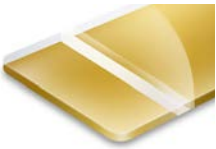
Clear/Silver
1.6 PHR370-206
3.2 PHR370-209



Clear/Blue
1.6 PHR510-206●
3.2 PHR510-209



Clear/Teal Green
3.2 PHR910-209



Clear/Gold
1.6 PHR750-206●
3.2 PHR750-209



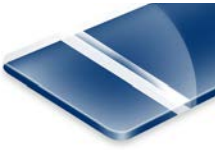
Clear/Sapphire
3.2 PHR560-209



Clear/Black
1.6 PHR400-206
3.2 PHR400-209



Clear/Ivory
3.2 PHR230-209



Clear/Airforce Blue
1.6 PHR540-206●
3.2 PHR540-209



Clear/Red
1.6 PHR600-206
3.2 PHR600-209



Clear/Burgundy
3.2 PHR630-209

● Please contact us to check availability and delivery dates

TroGlass Series

Our TroGlass acrylic series is available in an extensive assortment of colours, in variations of transparent, fluorescent, translucent and non-transparent, as well as different surface structures. The transparent, fluorescent and translucent colours offer constant light transmission superior to similar glass colours. The wide range of colours and different surface characteristics make Trotec's acrylic glass the number 1 choice for outstanding and eye-catching applications. Please consider: thickness tolerances according to the table on page 2.

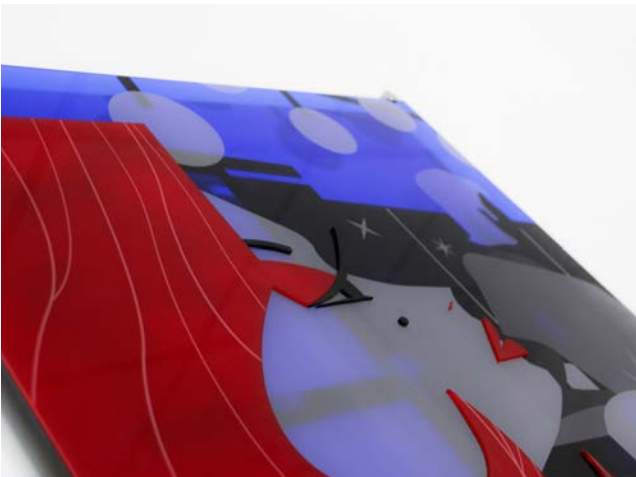


Here you can find the entire TroGlass series
in the Trotec webshop.
Scan QR Code now and order online.



/ SETTING NEW STANDARDS

TroGlass Colour Gloss



Material Features

Material: cast acrylic

Finish: gloss

Translucency: transparent, fluorescent, translucent, non-transparent

Cutting method: laser, saw

Sheet size:

1/1	1200 x 600 mm
1/2	600x 600 mm
1/4	600x 300 mm

***Please note that products 129879 (Metallic Anthracite-Silver) and 129878 (Metallic Bright Silver) are not suitable for exterior applications.**

- Constant light transmission superior to similar glass colours
- Glossy finish on both material sides
- High impact resistance
- Shop fitting, interior design or illumination and lighting are typical applications



Cut to size service



transparent



Glass Look
3.0 117143



Red
3.0 117131



Ice Blue
3.0 117132



Yellow
3.0 117129



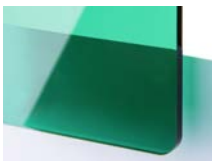
Green
3.0 117139



Blue
3.0 117133



Orange
3.0 117130



Dark Green
3.0 117140

fluorescent



Green fluorescent
3.0 117137



Red fluorescent
3.0 117136

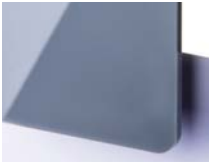


Ice Blue fluorescent
3.0 117138

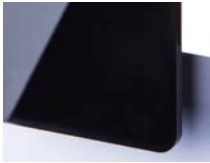
non-transparent



White
2.0 ACR2W12
3.0 117070
6.0 ACR6WH12



Grey
3.0 117127



Black
2.0 ACR2BK12
3.0 117128
6.0 ACR6BK12

Translucent



White
3.0 117069



Fuchsia
3.0 117105



Sky Blue
3.0 117125



Yellow
3.0 117071



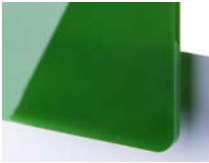
Green
3.0 117123



Blue
3.0 117126



Orange
3.0 117103



Dark Green
3.0 117124



Lilac
3.0 117141



Red
3.0 117104

metallic outdoor use



Gold
3.0 129875



Silver
3.0 129877

metallic indoor use



Bright Silver
3.0 129878



Anthracite-Silver
3.0 129879

TroGlass Satins



Material Features

Material: cast acrylic
Finish: matte, gloss
Translucency: translucent, non-transparent
Cutting method: laser, saw
Sheet size: $\frac{1}{1}$ 1200 x 600 mm
 $\frac{1}{2}$ 600 x 600 mm
 $\frac{1}{4}$ 600 x 300 mm

- Satin surface on both sheet sides
- Elegant and soft feeling in appearance
- High light transmission
- Ideal for illumination and backlighted signs, POS displays, interior design

Cut to size service



Translucent



Clear
3.0 117034



Light Pink
3.0 117037



Blue
3.0 117040



Yellow
3.0 117052



Fuchsia
3.0 117068



Teal
3.0 ACR3ST12



Bright Orange
3.0 117054



Violet
3.0 117041



Aquamarine
3.0 117035



Red
3.0 117038



White
3.0 117055
3.0 DHUACWDM02



Lemon Green
3.0 117057



Black
3.0 117059
3.0 DHUACBDF01

TroGlass Duo



Material Features

Material: cast acrylic

Finish: matte, gloss

Translucency: translucent

Cutting method: laser, saw

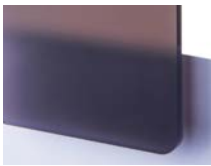
Sheet size:

$\frac{1}{1}$	1200 x 600 mm
$\frac{1}{2}$	600 x 600 mm
$\frac{1}{4}$	600 x 300 mm

Cut to size service



Cut to size service



Night and Day
3.0 117147

- Flexibility of use due to one gloss and one matte side
- Night and Day changes colour when backlit: Black - when no light from the back. Bright - when backlit.
- Ideal for illumination and backlit signs



Black Matte/Gloss
3.0 ACR3DB12

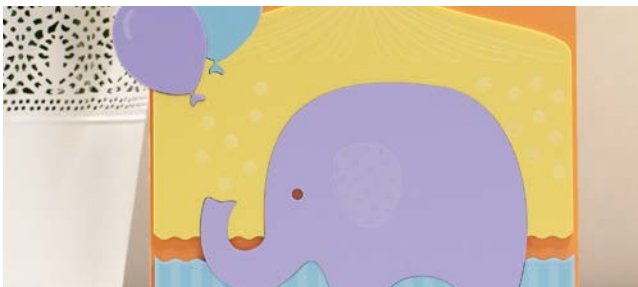


White Matte/Gloss
3.0 ACR3DW12



Clear Matte/Gloss
3.0 ACR3DC12

TroGlass Pastel



Material Features

- Material:** cast acrylic
Finish: matte, gloss
Translucency: opaque, intransparent
Cutting method: laser, saw
- Sheet size:**
- | | |
|-----|---------------|
| 1/1 | 1200 x 600 mm |
| 1/2 | 600 x 600 mm |
| 1/4 | 600 x 300 mm |
- Flexibility of use due to one gloss and one matte side
 - Excellent physical properties of cast acrylic sheet



Mint
3.0 160823



Yellow
3.0 160825



Orange
3.0 160828



Lilac
3.0 160824



Pink
3.0 160826



Light Blue
3.0 160829

TroGlass Neon



Material Features

- Material:** cast acrylic
Finish: gloss
Cutting method: laser, saw
- Sheet size:**
- | | |
|-----|---------------|
| 1/1 | 1200 x 600 mm |
| 1/2 | 600 x 600 mm |
| 1/4 | 600 x 300 mm |
- Combines the advantages of opalescence and striking fluorescence
 - Also the optimum properties such as excellent resistance to outdoor weathering make this product attractive



Pink
3.0 162490



Orange
3.0 162512



Yellow
3.0 162491



Green
3.0 162513

TroGlass XT



Material Features

Material: extruded acrylic, 1 ply

Finish: gloss

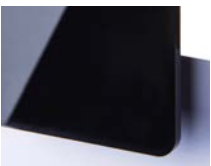
Cutting method: laser, saw

Sheet size:

1/1	1200 x 600 mm
1/2	600 x 600 mm
1/4	600 x 300 mm

- Transparent, extruded acrylic glass with low thickness tolerance
- Fantastic light transmission and excellent resistance to outdoor weathering
- Material of choice when high thickness accuracy is of utmost importance
- Used for POS displays, signage, model making and for pluggable constructions

Cut to size service



Black Gloss XT
3.0 DHUAEB03



Clear Gloss XT
3.0 162785



White Gloss XT
3.0 DHUAEW03



Mirror Silver XT*
3.0 DHUAMS03



Mirror Gold XT*
3.0 DHUAMG03



Mirror Rose Gold XT*
3.0 DHUARG03



Trophy Silver*
2.9 144081



Trophy Gold*
2.9 144142



Trophy Rose Gold*
2.9 144143

* Mirror range is not suitable for outdoor use

TroGlass Reverse



Material Features

Material: Cast acrylic with back-coating, 2 ply

Finish: gloss

Engraving depth: 0.08 mm

Cutting method: laser, saw

Sheet size:

1/1	1200 x 600 mm
1/2	600 x 600 mm
1/4	600 x 300 mm

- Transparent acrylic with a coloured coating on the reverse side
- Reverse engraved areas can be infilled with colours or backlit
- Black backing reduces cleaning time and enhances depth of colour
- Ideal for multi-coloured interior and exterior signs, safety signs, promotional and display signage

Cut to size service



Gloss/White
3.0 20625



Gloss/Red
3.0 20630



Gloss/Light Blue
3.0 119381



Gloss/Green
3.0 65005



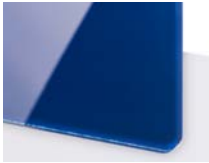
Gloss/Burgundy
3.0 119379



Gloss/Gold
3.0 20631



Gloss/Silver
3.0 20627



Gloss/Blue
3.0 20629



Gloss/Bronze Gold
3.0 119375



Gloss/Black
3.0 20628

TroGlass Clear



Material Features

- Material:** cast acrylic, 1 ply
Finish: gloss
Cutting method: laser, saw
Thickness (mm): 2mm, 3mm, 4mm, 5mm, 6mm, 10mm, 15mm, 20mm
Sheet size:
- | | |
|---------------|---------------|
| $\frac{1}{1}$ | 1200 x 600 mm |
| $\frac{1}{2}$ | 600 x 600 mm |
| $\frac{1}{4}$ | 600 x 300 mm |
- Perfect optical clarity and therefore great alternative to glass
 - Formable, UV-stable and hard-wearing
 - Polished laser cut edges, no post-processing necessary
 - Ideal for interior and exterior signs, promotional & display signage

Cut to size service



Clear
20.0 166528



Clear
15.0 166527



Clear
10.0 166526



Clear
6.0 121863



Clear
5.0 121862



Clear
4.0 121801



Clear
2.0 ACR2C12



Clear
3.0 121800

TroGlass Mirror



Material Features

Material: cast acrylic

Finish: gloss

Cutting method: laser, saw

Sheet size:

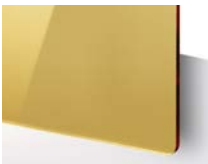
1/1	1200 x 600 mm
1/2	600 x 600 mm
1/4	600 x 300 mm

- TroGlass Mirror is an extruded acrylic glass with a reflective surface
- Perfect alternative to real glass mirror because they are lighter and have a higher breakage resistance
- Mirror-inverted engraving on the reverse side
- Used for wall decorations, jewellery, displays, interior design, ..

Cut to size service



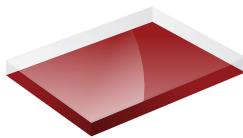
Silver
3.0 ACR3MS12



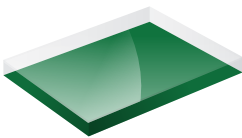
Gold
3.0 ACR3MG12



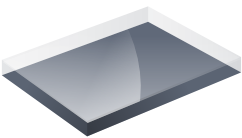
Rosé Gold
3.0 ACR3MRG12



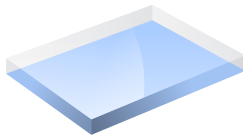
Mirror Deep Red
3.0 ACR3MDR12



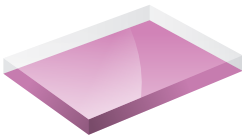
Mirror Green
3.0 ACR3MGRN12



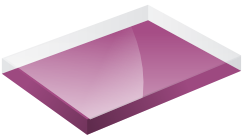
Mirror Grey
3.0 ACR3MGRY12



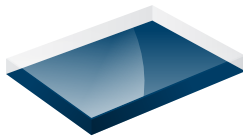
Mirror Light Blue
3.0 ACR3MLB12



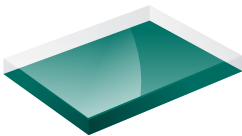
Mirror Light Pink
3.0 ACR3MLP12



Mirror Purple
3.0 ACR3MP12



Mirror Royal Blue
3.0 ACR3MRB12



Mirror Teal
3.0 ACR3MT12

TroGlitter



Material Features

Material: cast acrylic

Finish: gloss

Cutting method: laser, saw

Sheet size: $\frac{1}{1}$ 1015 x 595 mm
 $\frac{1}{2}$ 507 x 595 mm
 $\frac{1}{4}$ 297 x 507 mm

- Cast acrylic in which glitter particles are evenly distributed throughout the material*
- Glitter Acrylic offers massive opportunities for creative minds and designers, and they can explore new visual effects
- Offered in a variety of colours
- Ideal for sales displays, novelties or even lettering applications

Cut to size service



Red
3.0 153705



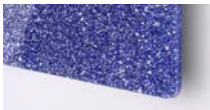
Black
3.0 144645



Silver
3.0 144640



Dark Red
3.0 144643



Blue
3.0 144646



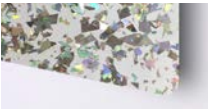
Gold
3.0 144641



Pink
3.0 144644



Green
3.0 153706



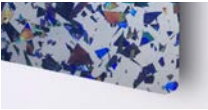
Chunky Silver*
3.0 FTLB100



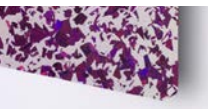
Chunky Gold*
3.0 FTLB200



Chunky Tiffany Blue*
3.0 FTLB702



Chunky Blue*
3.0 FTLB709



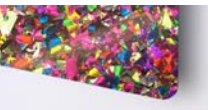
Chunky Purple*
3.0 FTLB800



Chunky Rose Gold*
3.0 FTLB911



Chunky Light Blue*
4.0 JC2



Chunky Red*
4.0 JC3



Chunky Green*
4.0 JC5



Chunky Dark Blue*
4.0 JC6



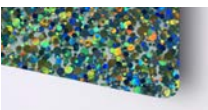
Chunky Red Dot*
3.0 YD204



Chunky Purple Dot*
3.0 YD206



Chunky Black and White Dot*
3.0 YD221



Chunky Green Dot*
3.0 YD227

* Due to the nature of the product the glitter in the chunky range is not evenly distributed nor a uniform colour

Important Note: Due to the nature of "Glitter" products, sheets are affected more than normal by external weather conditions like heat and humidity causing sheets to warp or bow

Metal

Trotec offers metal products for both laser engraving and mechanical engraving. One product group is the anodised aluminium, which features a protective anodised coating that remains intact during laser processing. The image contrast is caused by the removal of the coloured coating and almost photographic qualities can be achieved. Additionally, a detailed white engraved image is created. We offer metal for engraving in different colours and also with a matte or a gloss surface.



Here you can find the entire metal series in the Trotec webshop.
Scan QR Code now and order online.



30110-30

trotec

www.trotec-materials.com | www.troteclaser.com

Anodised Aluminium



Material Features

Material: anodised aluminium

Finish: matte, gloss

Cutting method: saw, guillotine

Sheet size: 1000 x 500 mm

- Suitable for both engraving with a CO₂ laser and with mechanical engraving devices
- Image contrast is caused by the removal of the coloured coating
- Almost photographic qualities can be achieved
- Please consider that the Standard Line is less robust due to the thinner anodised coating
- Typical applications are type plates, signs with advertising impact and ID tags



Cut to size service



Premium Line

Aluminium Satin Silver matte

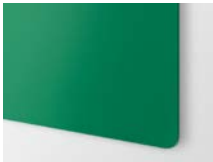


0.5	30105-00
	<u>5277</u>
1.0	30110-00
	<u>3503</u>
1.5	30115-00
	<u>3544</u>
2.0	30120-00
	<u>4256</u>
3.0	30130-00
	<u>4806</u>



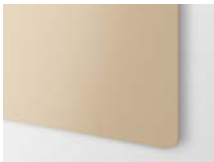
Black matte

0.5	30105-10
	<u>4671</u>
1.0	30110-10
	<u>3504</u>
1.5	30115-10
	<u>3545</u>
2.0	30120-10
	<u>4187</u>
3.0	30130-10
	<u>9075</u>



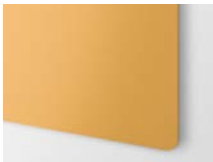
Green matte

0.5	30105-40
	<u>34356</u>
1.0	30110-40
	<u>3509</u>
1.5	30115-40
	<u>3548</u>
2.0	30120-40
	<u>4185</u>
3.0	30130-40
	<u>65331</u>



Nickel Silver

0.5	30105-50
	<u>65308</u>
1.0	30110-50
	<u>3540</u>
1.5	30115-50
	<u>3549</u>
2.0	30120-50
	<u>65320</u>
3.0	30130-50
	<u>65326</u>



Gold matte

0.5	30105-60
	<u>65310</u>
1.0	30110-60
	<u>3541</u>
1.5	30115-60
	<u>3560</u>
2.0	30120-60
	<u>4184</u>
3.0	30130-60
	<u>15890</u>



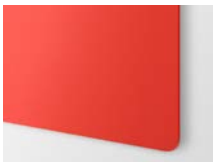
Blue matte

0.5	30105-30
	<u>4447</u>
1.0	30110-30
	<u>3508</u>
1.5	30115-30
	<u>3547</u>
2.0	30120-30
	<u>4186</u>
3.0	30130-30
	<u>65332</u>



Stainless Steel matte

1.0	30110-90
	<u>12659</u>
1.5	30115-90
	<u>4603</u>
2.0	30120-90
	<u>13667</u>



Red matte

0.5	30105-20
	<u>34357</u>
1.0	30110-20
	<u>3505</u>
1.5	30115-20
	<u>3546</u>
2.0	30120-20
	<u>4763</u>
3.0	30130-20
	<u>65333</u>



Bronze matte

0.5	30105-70
	<u>65316</u>
1.0	30110-70
	<u>3542</u>
1.5	30115-70
	<u>3561</u>
2.0	30120-70
	<u>4762</u>
3.0	30130-70
	<u>65238</u>

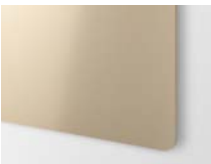


Dark Bronze matte

0.5	30105-80
	<u>65318</u>
1.0	30110-80
	<u>3543</u>
1.5	30115-80
	<u>3562</u>



Aluminium Satin	
1.0	30210-00 <u>3563</u>
1.5	30215-00 <u>3582</u>
2.0	30220-00 <u>4483</u>



Nickel Silver gloss	
1.0	30210-50 <u>3568</u>
1.5	30215-50 <u>3588</u>
2.0	30220-50 <u>65301</u>



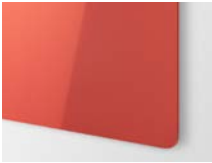
Black gloss	
1.0	30210-10 <u>3564</u>
1.5	30215-10 <u>3583</u>
2.0	30220-10 <u>46422</u>



Green gloss	
1.0	30210-40 <u>3567</u>
1.5	30215-40 <u>3587</u>
2.0	30220-40 <u>65304</u>



Gold gloss	
1.0	30210-60 <u>3569</u>
1.5	30215-60 <u>3589</u>
2.0	30220-60 <u>4760</u>



Red gloss	
1.0	30210-20 <u>3565</u>
1.5	30215-20 <u>3585</u>
2.0	30220-20 <u>65307</u>



Blue gloss	
1.0	30210-30 <u>3566</u>
1.5	30215-30 <u>3586</u>
2.0	30220-30 <u>65306</u>



Bronze gloss	
1.0	30210-70 <u>3580</u>
1.5	30215-70 <u>3590</u>
2.0	30220-70 <u>65302</u>



Dark Bronze gloss	
1.0	30210-80 <u>3581</u>
1.5	30215-80 <u>3591</u>
2.0	30220-80 <u>65303</u>

Standard Line



Standard natural	
1.0	122787

DuraBlack®



Material Features

Material: anodised aluminium

Finish: matte

Cutting method: saw, guillotine

Sheet size: ⁽¹⁾ 500x 600 mm

- Coated aluminium with a black surface
- Can be marked in white with a CO₂ laser
- Particularly resistant to environmental influences (weathering, salt water, chemicals etc)
- Conforms with various industrial and military standards including: MIL-STD 130N, A-A-50271 (MIL-P-514D) and MIL-STD-15024F, Type L



Cut to size service



Black matte
0.5 77795

AlumaMark®



Material Features

Material: anodised aluminium

Finish: matte

Cutting method: saw, guillotine

Sheet size: ⁽¹⁾ 500 x 600 mm
⁽²⁾ 300 x 500 mm
⁽³⁾ 254 x 300 mm

- Coated aluminium
- Can be marked in black with a CO₂ laser
- Even lower laser power levels can create a high-contrast engraving
- Typically used for interior signs, name plates, badges, trophy signs and labels



Cut to size service



Satin Gold
0.5 AM711.5 ⁽¹⁾
0.5 AM711 ⁽²⁾



Satin Silver
0.13 AM341ADH ⁽³⁾
0.5 AM341 ⁽²⁾
0.5 AM341.5 ⁽¹⁾



Satin Bronze ⁽²⁾
0.5 AM874



Mirror Gold ⁽²⁾
0.5 AM710



Mirror Silver ⁽²⁾
0.5 AM340



Matte Silver ⁽³⁾
0.13 AM342ADH



Matte Tan ⁽²⁾
0.5 AM228

Wood

Trotec wood products are selected for laser engraving, laser cutting, mechanical engraving and mechanical cutting. Both the natural wood as well as the MDF and Plywood alternatives allow for fine detail marking and cutting with a laser.

Create your outstanding signage with the natural characteristics of real wood. Trotec wood offers a high variation of looks and results when laser engraving, depending on laser settings - deep engraving, dark black marking, light surface marking.

Please consider: Wood is a natural product, so please review our deviations and tips for storage located on our webshop.



Here you can find the entire wood series in the Trotec webshop.
Scan QR Code now and order online.



/ SETTING NEW STANDARDS

Solid Wood



Material Features

Material: solid wood
Finish: smooth, matte and lacquered surface
Cutting method: saw, laser
Sheet size: 600 x 300 mm

- Ideally suited for the requirements of laser processing
- Smooth, matte surface offers an authentic high quality appearance and durability
- Can be used for a multitude of applications such as small interior signage, interior decorations, fashion accessories and promotional giftware



Cut to size service



Maple
600 x 300 x 5mm 120182



Oak
600 x 300 x 5mm 120183



Cherry
600 x 300 x 5mm 120185
300 x 100 x 5mm 120170



Walnut
600 x 300 x 5mm 120186
300 x 100 x 5mm 120171



Alder
600 x 300 x 5mm 120184



Wood is a living, natural material and each panel is unique. Differences in structure and appearance within a panel can occur. We recommend to allow time for the wood to acclimatise to its new environment before processing. Storage should be in an area with constant temperature/humidity.

Wood Veneer



Material Features

Material: Veneered wood sheets
Finish: smooth, matte and lacquered surface
Cutting method: saw, laser
Sheet size: 600 x 300 mm

- Elegant, smooth, matte surface
- It comes with a fibre board core
- Real wood laminated on both sides
- Suitable for a wide range of applications - interior signs, gifts, architectural model making, arts and crafts



Cut to size service



Cherry
3.0 119801



Maple
3.0 119798



Oak
3.0 154946



Bamboo
3.0 119799



Walnut
3.0 119952



Birch
3.0 119800

Natural Wood Veneer



Natural Eucalypt
3.0 LWEUC256X3
300 x 600mm



Natural Colonial Pine
3.0 LWCPINE36X3
300 x 600mm



Natural Poplar
3.0 LWPOP36X3
300 x 600mm



Natural Birch
3.0 LWBIR3
1200 x 600mm
3.0 LWBIR36x3
300 x 600mm

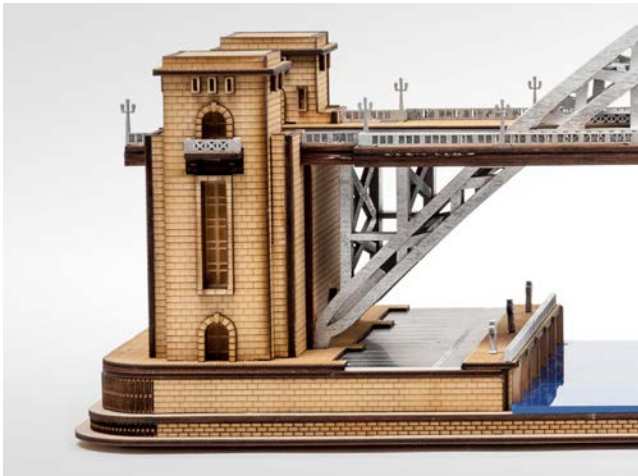


Natural Bamboo
3.0 LWBAMB3
1200 x 600mm
3.0 LWBAMB36X3
300 x 600mm



Natural Radiata Pine
3.0 LWRAD36X3
300 x 600mm

Plywood



Material Features

Material: Plywood
Finish: untreated
Cutting method: laser, saw
Sheet size: 600 x 300 mm

- Satin surface on both sheet sides
- Elegant and soft feeling in appearance
- High light transmission
- Ideal for illumination and backlighted signs, POS displays, interior design



Cut to size service



Poplar
600 x 300 mm
3.0 68987
6.0 68990



Basswood
600 x 300 mm
1.5 LWBLP15



Birch Interior
600 x 300 mm
3.0 LWE3P633



Wood is a living, natural material and each panel is unique. Differences in structure and appearance within a panel can occur. We recommend to allow time for the wood acclimatise to its new environment before processing. Storage should be in an area with constant temperature/humidity.

MDF



Material Features

Material: MDF
Finish: untreated
Cutting method: laser, saw
Sheet size: 1220 x 600 mm
600 x 300 mm

- Smooth surface quality
- Furniture grade MDF
- Homogenous fibre structure
- Great results even in fine-detail laser cutting due to high fibre density
- Ideal for architectural model making, prototyping, giftware, toys, arts and crafts

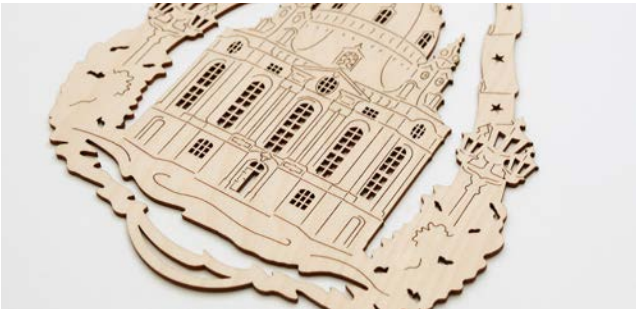


Cut to size service



300 x 600 mm
3.0 68996
6.0 119957

Balsa



Material Features

Material: Balsa wood
Finish: untreated
Cutting method: laser, saw
Sheet size: 100 x 300mm or 50 x 50 x 50mm

- Ideal for architectural model making, prototyping, giftware, toys, arts and crafts



Cut to size service



50 x 50 mm
50 LWBB50



300 x 100 mm
3.0 LWBB313

TroCraft Eco



Material Features

Material: natural cellulose
Finish: untreated
Cutting method: saw, laser
Sheet size: 600 x 300 mm (pack of 5)

- Laser material made of recyclable resources - out of pure cellulose fiber
- Produced without using additives, is fully biodegradable and emission-free
- Create sustainable toys, interiors or applications for furniture making, vehicle construction and tool making



Cut to size service



1.5 145325
3.0 145326

LaserCork



Material Features

Material: Cork
Finish: untreated
Cutting method: saw, laser
Sheet size: 600 x 300 mm (pack of 5)

- Natural, environmentally friendly laser material
- The fine grain structure and the beautiful dark brown engraving make LaserCork suitable for many different creative, decorative or functional applications with a natural touch
- Relatively low laser power is sufficient for cutting our LaserCork
- LaserCork is the perfect laser material for coasters and wall decorations such as a world map or pin board



Cut to size service



1.5 150640
3.0 150641

Paper

LaserPaper is a laser-friendly paper available in a variety of shades and gsm weights, which produces outstanding results when printed, laser cut and laser engraved. Trotec's LaserPaper has been carefully selected to produce a high level of colour contrast when laser engraved as well as a crisp, clean edge when laser cut. LaserPaper is incredibly versatile and can be used for a multitude of applications, such as invitations, brochures, business cards, scrap booking, greeting cards and more.



Here you can find the entire LaserPaper series in the Trotec webshop.
Scan QR Code now and order online.



LaserPaper Colours



Material Features

Material: 1 Ply Card Stock
Finish: Metallic, Textured, Gloss, Wood FX, Matte, Smooth
Thickness: 216 - 380 GSM
Processing Method: Print, laser cut & engrave
Sheet Size: 297mm x 420mm (A3), 300mm x 580mm
(S1 - for Speedy 100 bed or larger)
Grain Direction: Long

- Especially suitable for laser processing
- It is non-fading and easily folds and bends to create shapes
- Cutting this paper with a laser allows for filigree patterns and fine details to be created without any burned marks
- Typical applications are greeting or invitations cards, table decorations, book covers and promotional printing



Cut to size service



10 pk



Galvanised - Metallic
300 GSM LP74-A3
300 GSM LP74-S1



Gold - Metallic
300 GSM LP35-A3
300 GSM LP35-S1



Black - Smooth
380 GSM LP40-A3
380 GSM LP40-S1

20 pk



Mandarin - Textured
300 GSM LP61-A3
300 GSM LP61-S1



Navy Blue - Textured
216 GSM LP55-A3
216 GSM LP55-S1



Concrete - Textured
300 GSM LP32-A3
300 GSM LP32-S1



Cottage Red - Textured
300 GSM LP60-A3
300 GSM LP60-S1



Dark Blue - Smooth
270 GSM LP65-A3
270 GSM LP65-S1



Slate Grey - Textured
300 GSM LP31-A3
300 GSM LP31-S1



Blue - Textured
250 GSM LP51-A3
250 GSM LP51-S1



White - Gloss
310 GSM LP20-A3

Sample Pack
216-380 LPSP-A3

LaserPaper Wood



Material Features

- Material:** Real Birch or Cherry wood on paper backing
- Finish:** matte
- Sheet size:** DIN A3
- Package quantity:** 10 per pack

- Features a real wood surface with a white cardboard backing
- Carefully designed to produce a high level of contrast when laser engraved, and a crisp clean edge when laser cut
- Combine print and laser cut for unique artwork
- Promotional printing, invitation cards and table decorations are typical applications

Cut to size service



Maple
305 GSM LP03-A3



Cherry
305 GSM LP15-A3

Gifts

Grow your business by personalising gifts and ready-made products for your customers. Apply individual laser engravings to these trendy products and benefit from this simple and cost-effective solution.

We are constantly expanding this product range, please check our website for the latest additions.



Here you can find all gifts in the Trotec
webshop.
Scan QR Code now and order online.



/ SETTING NEW STANDARDS

Leatherette







Material Features

The Leatherette engraves with a Laser effortlessly and in a single pass creating a Gold finish on the black leatherette for a sophisticated look while the rawhide engraves black for a great designer look. Our laserable leatherette range comes in a variety of products, all ideal for promotional and brand awareness. The range includes, but is not limited to: desk wedges, portfolios, pen holders, coasters and more.

Promotional

	Description	Colour	Code
	Single Pen Case	Black	LL04BK1
	Single Pen Case	Rawhide	LL04RH1
	Portfolio A5	Black	LL05BK79
	Portfolio A4	Black	LL05BK912
	Desk Wedge	Black	LL06BK8
	Desk Wedge	Rawhide	LL06RH8
	Portfolio A4 Zipper	Black	LL10BKS
	Pen Sleeve	Black/Gold	LL11BKG
	Pen Sleeve	Black/Silver	LL11BKS
	Pen Sleeve	Rawhide	LL11RH

Leatherette Gift Range

	Description	Colour	Code
	Laserable 2 piece Wine Tool Set	Black/Silver	LL07BKS
	Laserable Magnetic Bottle Openers	Black/Gold	LL09BKG
	Laserable Square Coasters	Black/Gold	LL03BKS
	Laserable Round Coasters	Rawhide/Black	LL03RHR

Accessories

Photo frames

Description	Code
Alder Photo Frame 7.9" x 10" Photo size 5" x 7"	133909
Alder Photo Frame 7 x 9" Photo size 4" x 6"	133910
Alder Photo Frame 11" x 13" Photo size 8"x 10"	133911
Alder Photo Frame 7" x 7.9" Photo size 6" x 4"	133922
Alder Photo Frame 6.4" x 8" Photo size 3.5" x 5"	134287



Masking materials

Description	Code	Price
Paper mask medium tack (30mm x 90 metres)	LBSUS016	\$102.00

Ticketing strips

Description	Unit	Code
H: 35mm I: 31mm (1 3/8") Natural/Silver Flat Ticketing Strip	1m	EX001
H: 35mm I: 31mm (1 3/8") Matte Black Flat Ticketing Strip	1m	EX002
H: 60mm I: 57mm (2 3/8") Natural Silver Flat Ticketing Strip	1m	EX003
H: 60mm I: 57mm (2 3/8") Matte Black Flat Ticketing Strip	1m	EX004
H: 35mm I: 31mm (1 3/8") Natural Silver Desk Ticketing Strip	1m	EX007
H: 35mm I: 31mm (1 3/8") Matte Black Desk Ticketing Strip	1m	EX008
50mm clear natural anodised door extrusion	2m	MSO50

Flat profiles

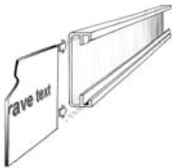


Desk profile



Cipher Frame System

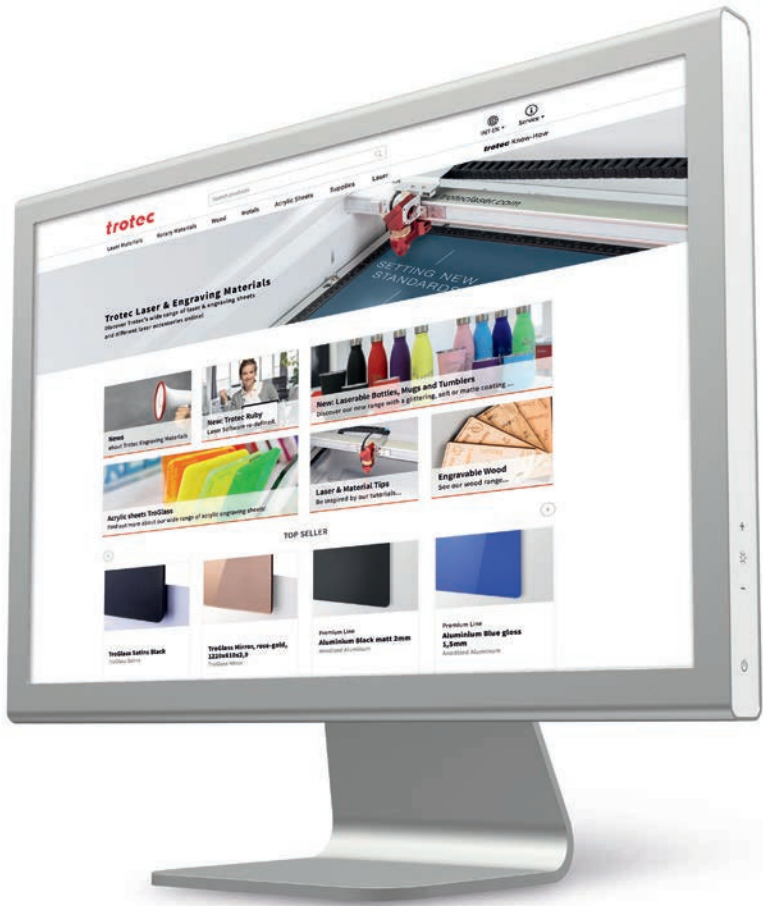
Description	Unit	Code
40mm Extrusion Matte Black	1m	C40B
40mm Extrusion Matte Natural/Silver	1m	C40N
60mm Extrusion Matte Black	1m	C60B
60mm Extrusion Matte Natural/Silver	1m	C60N
60mm End Clips Black	EACH	CE60
40mm End Clips Black	EACH	CE40



Order online in our engraving supplies shop

You can quickly and easily purchase our high-quality laser and engraving materials online in our webshop at www.engraving-supplies.com.au

In our webshop you will find a comprehensive assortment of products, up-to-date information about our materials, usage and processing tips, and practical sample instructions.



Save valuable time.



Have a complete overview of your online orders.



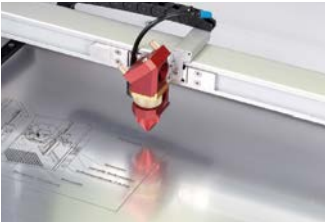
Order 24/7.



Benefit from the tips and tricks of our experts.



Learn exclusively about new products and offers.



Laserable Bottles, Mugs and Tumblers



Material Features

Material: high-grade 304 stainless steel

Finish: matte, soft

Capacity: 500 ml

- Made of high-grade 304 stainless steel with a coloured coating that is perfect for laser engraving
- Double-walled vacuum insulation keeps ice cold drinks cool up to 24 hours, hot drinks keep their temperature up to 12 hours
- Whether skiing, at work or on the beach - you want these modern bottles with you at every moment
- Notes: The bottles are not recommended for dishwasher cleaning. Please check our webshop for latest colours.

Matte



Black
500 ml 147548



Mint
500 ml 150275



Blue
500 ml 150277



Pink
500 ml 150274



Orange
500 ml 150276



Silver*
500 ml 150278

Soft



Yellow
500 ml 163878



Green
500 ml 163879



Navy
500 ml 163880



Turquoise
500 ml 163881



Plum
500 ml 163902



Red
500 ml 163903

Tumblers (matte)



Black
480 ml 163920



Pink
480 ml 163919

Mugs



Black (Matte)
360 ml 163911



White (Gloss)
360 ml 163921

** Requires marking paste/spray or fiber laser*

Supplies

Looking for engraving supplies that simplify and support your daily workflow? From workholding mats to pins and magnets for name badges to laser marking solutions (so you can use your CO₂ laser on metals) you will find it in our range. Here you will also find the laser rubber we use for our Trodat stamps, as well as various acrylic colours for reverse engraved areas.



Here you can find all accessories in the Trotec webshop.
Scan QR Code now and order online.



/ SETTING NEW STANDARDS

Laser marking solutions



Material Features

Material: pigments and particles embedded in a carrying liquid
Usage: when laser marked, the particles melt together with the surface of the core material (e.g. metal), leaving a permanent dark marking
Consumption: recommended within 6 months after delivery

- By applying the spray or paste on the blank surface (metal, glass, ceramic), CO2 lasers, as well as fiber or Nd:YAG lasers, produce a permanent black marking
- This marking is highly resistant to mechanical and chemical stresses as well as high temperatures
- High contrast and resolution can easily be achieved
- Perfect for bar coding, product serialisation, logos or individual pieces

Laser marking metals

	Product	Size	Code
aerosol	markSolid Spray Metal 114*	300 ml	57792
	CerMark LMM 6000	340 g	THLMM6000.A12
	Thermark LMM 14**	170 g	THLMaM14.TM.A6
paste	markSolid Paste Metal 015	50 g	110200
	markSolid Paste Metal 015	100 g	110201
	markSolid Paste Metal 015	200 g	84577
	markSolid Paste Metal 015	500 g	84578
	markSolid Paste Anodised Aluminium	50g	68776
	CerMark LMM 6000 (for stainless steel)	250 g	THLMM6000.250
	CerMark LMM 6000 (for stainless steel)	50 g	THLMM6000.50
	CerMark LMM 6000 (for stainless steel)	500g	THLMM6000.500
	TherMark [LMM14 Black]	50g	THLMM14.TM.50
	TherMark [LMM14 Black]	250g	THLMM14.TM.250
tapes	Thermark 1 inch x 15m roll of tape	15m roll	THLMM6018.LF1
	Thermark 2 inch x 15m roll of tape	15m roll	THLMM6018.LF2

* Spray not recommended for airfreight
**LMM14 recommended for softer metals such as Brass, Pewter, Copper and Aluminium

Laser marking glass and ceramics

	Product	Size	Code
liquid	markSolid Liquid Glass/Ceramic 590 to be applied by airbrush	100g	110202
paste	Cermark Black for Glass and Ceramic	50g	THLMC6044P.50
spray	CerMark LMC 6044	340g	THLMC6044P.A12

How to use laser marking solutions



1. Preparation

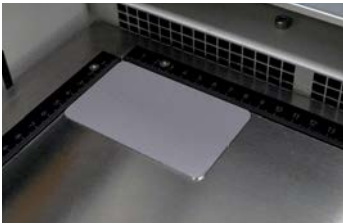
- **Surface Cleaning:** Product needs to be applied directly on the blank surface (metal, glass, ceramic). The surface has to be dry and clean, free of dust, grease, silicone, etc.
- **Spray:** Shake the spray well to make sure solid sediments are dissolved.
- **Pastes:** Dilute the paste with ethanol (alcohol) or water according to the description on the product label. For curved surfaces reduce the grade of dilution.



2. Applying

The more evenly and the more accurately you apply the product onto the surface, the better results you achieve. The principle “less is more” applies often in regard to the layer thickness.

- **Spray:** Spray from 20 - 30 cm distance
- **Paste:** Apply with brush, foam or airbrush



3. Drying

The coating must be completely dry before starting the laser marking. It usually takes 1-2 minutes when dried by air, but a hot air blower (e.g. a simple hair dryer) can reduce the drying time.

Tip: You may reduce the drying time by putting the work piece in the laser with exhaust turned on.



4. Laser Marking

The products can be used for marking with CO₂ lasers, Nd:YAG lasers and fiber laser, to name a few. Differences in laser power, wave length and other factors influence the final settings required. After laser marking, excessive coating can be removed by wiping with a damp cloth or by washing with water.

Tips

- Light-grey to brown results indicate that too much laser power or too little marking speed were used.
- If the marking can be rubbed off, too little power or too high laser speed can be the cause.
- The same result may occur if the coating is thicker than it should be, or if the material surface is not free of oil or dirt.

Our recommendations

Product	Application
markSolid Paste Metal 015	Black marking on blank metal (stainless steel, brass, etc.)
50 g, 100 g, 200 g, 500 g	Paste is suitable for application by brush, especially for smaller areas, or by airbrush.
markSolid Spray Metal 114*	Black marking on blank metal (stainless steel, brass, etc.)
300 ml	Using a spray might be the easiest way for an even coating, especially for larger areas.
markSolid Liquid Glass/Ceramic 590	Black marking on glass and ceramic
100 g	Liquid can be applied using an airbrush.
Tape	Recommended for anodised aluminium

Trodat Stamps and Seals



Material: Brushed stainless steel (Professional), plastic (Printy)
Usage: Professional for the office, Printy for at home & on the move

- **Professional:** The solid metal construction made from brushed stainless steel guarantees greatest possible stability & durability. The new finger guard keeps fingers clean when changing the ink cartridge & setting the date. The special grip zones on the feet, combined with the slim stamp design and the new date band drive mechanism on most models guarantee faster and preciser date setting & alignment.
- **Printy:** The Original Printy 4.0 is climate-neutral. As standard. Two special grip zones allow a cartridge to be exchanged without touching the ink reservoir—for guaranteed clean fingers. The Original Printy 4.0 is one of the world’s smallest and lightest self-inking stamps. Soft-touch elements guarantee a pleasant, secure stamp grip. The Original Printy 4.0’s crystal-clear positioning window also enables accurately placed imprints. The transparent bottom edges allow for precise alignment.

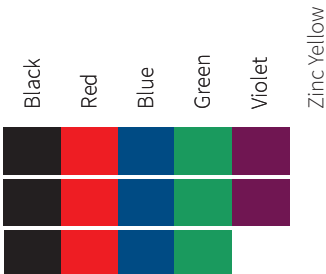
Printy Stamp

Size	Shape	Type	Code
26mm x 9mm	Rectangular (small)	custom	L4910
75mm x 38mm	Rectangle (large)	custom	L4926
19mm	Round (small)	custom	L46019
45mm	Round (large)	custom	L46045
12mm x 12mm	Square (small)	custom	L4921
40mm x 40mm	Square (large)	custom	L4924
50mm x 30mm	Rectangle	custom + date	L4729
75mm x 38mm	Rectangle	custom + date	L4726
30mm	Round	custom + date	L46130
45mm	Round	custom + date	L46145

Replacement Ink Cartridges



Size
28 ml
1 Ltr



Laser Rubber Sheets



Product	Size	Color	Order Number
AERO	A4 / 2.3 mm	light grey (850208)	L850208.A4 (Aero)
Fastest odourless laser rubber	A3 / 2.3 mm	light grey (850208)	L850208.A3 (Aero)
<ul style="list-style-type: none">• Low odour while engraving• Very easy to clean• 60° (Aero) Shore-A			

Delrin Sheet

Product	Size	Color	Order Number
Sheet	297 x 305mm	White	DELRIW

Advertising materials



Material Features

Material: modified acrylic, cast acrylic, wood
Usage: advertising materials for your customers to support you with your business

- At Trotec, we strive to help our customers become more profitable and put customer needs at the centre of our core values
- We offer a sample binder and colour fans which you can present your customers, showing them the wide range of high-quality products available
- Order quality samples that your customers can touch and see in person

TroLase Series Colour fans



Product	Size	Order No.
Colour fan TroLase		92488
Colour fan TroLase Metallic		92489
Colour fan TroLase Thins	70 x 30 mm	92490
Colour fan TroLase Reverse		92491
Colour fan TroLase Metallic Plus		118063

TroGlass Colour chains



Product	Size	Order No.
Colour fan TroGlass Colour Gloss		117809
Colour fan TroGlass Satins		117810
Colour fan TroGlass Pastel	50 x 50 mm	161079
Colour fan TroGlass Duo		117892
Colour fan TroGlass Mirror		CFTGM
Colour fan TroGlass Reverse		CFTGR
Colour fan TroGlitter		CFTG

More Colour fans



Product	Size	Order No.
Colour fan MDF Veneer	70 x 30 mm	120783
Colour fan Solid Wood	70 x 30 mm	120784

Sample Binder



Product	Size	Order No.
Sample Binder Full	250 x 210 mm	99243

Colour Fillings



Material Features

Material: highly versatile, water-based acrylic colours
Application: all colours can be thinned with water to pale washes, or used directly from the pot or tube

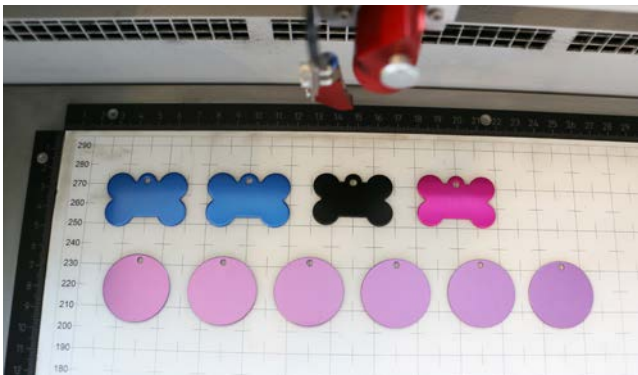
- Specially designed to use on laser engraved plastics, our acrylic filler paints will not affect nor “craze” the lasered area
- Fill reverse engraved signs with acrylic colours and create long-lasting, colourful, multi-colour signs
- Offer excellent light-fastness, permanence, durability and covering power
- Create colour effects with individually mixed colours



Colour	Code
Black (59ml)	146419
Red (59ml)	149420
Bright Red (59ml)	146488
Bright Pink (59ml)	146489
Blue (59ml)	146483
Silver (59ml)	146484
Gold (59ml)	146487
Yellow (59ml)	146486
White (59ml)	146421
Green (59ml)	146485



Workholding Mat



Material Features

Material: thin plastic with a special coating on both sides
Size: various sheet sizes for different laser bed sizes

- Holds material flat on the table - no tape, clamps or additional adhesives are required
- Allows laser and rotary users without a vacuum table to hold down a workpiece and prevent it from moving while operating
- Also recommended for applications where the vacuum table cannot be fully utilised – for example when marking or engraving a high number of small pieces
- Material can be released easily again

Seklema Workholding Mat

Product (Cut to size)	Size
Seklema 67064	1200 x 600 x 3 mm
Seklema 67064 (1/2)	600 x 600 x 3 mm
Seklema 67064 (1/4)	600 x 300 x 3 mm

Adhesives



Type	Description	Code
tape	12mm x 50m white PE foam tape	BFN2208
	12mm x 50m General Purpose High Adhesive	BFN251
	D/S PVC Acrylic bed tape 12mm	QUDST12
	D/S PVC Acrylic bed tape 24mm	QUDST24
Glue	Acrylic bond 42.5g	ACRBOND1
	Acrylic bond 142g	ACRBOND2
	Acrylic bond 500ml	ACRBOND110
	Acrylic glue Wld on 3	ACRWELD3
Sheet	3M (0.06mm thick) adhesive applied to laminate	ACRAD3M
	3M (0.13mm thick) adhesive applied to laminate	ACRAD4
	Tesa aggressive adhesive applied to laminate	ACRADTESA
	Tesa acrylic adhesive applied to laminate	ACRAD3T
Paper Mask	Medium tack 300mm x 90mm	LBSUS016

Cleaners



Description	Code
Decal Remover - 340g Spray Can	BG16DSR

Identification



Material Features

Package quantity: 20 pieces

- Offer your customers an extra service by providing finished badge fixing solutions
- Create name signs by engraving laser materials and using these pins and magnets for the reverse side

	Code (black)	Code (silver)	Code (gold)
Badge Holders			
Small 15mm x 65mm	035420	034320	033720
Medium 20mm x 73mm	025420	N/A	N/A
Large 36mm x 70mm	005420	N/A	N/A

Description	Code
Badge Pin 37mm white no adhesive	BP001
Badge Pin 37mm white with adhesive	BP002
Badge Pin 37mm black with adhesive	BP009
Plastic Croc Clip Rotating base with adhesive	BP003
Magnetic badge black (45mm x 13mm) 20pk	3611
Croc Clips Adhesives and Pin	BP004



Machine Accessories

Cutting Tables

Description	Compatible	Code
Honeycomb cutting table	Rayjet	TM31610
Honeycomb cutting table	Speedy 100, fiber, flexx	TM3901
Honeycomb cutting table	Speedy 300, fiber, flexx, Rayjet 300	TM88340
Honeycomb cutting table	Speedy 360	TM94224
Aluminium slat table	Speedy 360	TM94217
Acrylic slat table	Speedy 360	TM94219
Acrylic grid table	Speedy 360	TM95742
Acrylic cutting table	Speedy 360	TM95743
Black Aluminium grid-table	Speedy 400, fiber, flexx	TM59743
Cutting table (lamellas)	Speedy 400, fiber, flexx	TM59766
White plastic cutting grid	Speedy 400, fiber, flexx	TM59766
Honeycomb cutting table - for vacuum table	SP500	TM30671
Black Aluminium grid - for vacuum table	SP500	TM43317
Replacement black grid - no frame	SP500	TM43316
White plastic cutting grid for 500	SP500	TM43757

Rotary attachments

Description	Compatible	Code
Rotary attachment	Rayjet	TM32563
Rotary attachment with cones	Speedy 100, fiber, flexx	TM4335
Rotary attachment with cones	Speedy 300, fiber, flexx, Rayjet 300	TM4585
Rotary attachment combi (rolls and cones)	Speedy, 300, fiber, flexx, Rayjet 300	TM5852
Rotary attachment with cones	Speedy 360	TM95305
Rotary attachment combi (rolls and cones)	Speedy 360	TM91554
Rotary attachment with cones	Speedy 400, fiber, flexx	TM59784
Rotary attachment with rolls	Speedy 400, fiber, flexx	TM59787
Rotary attachment combi (rolls and cones)	Speedy 400, fiber, flexx	TM59789
Rotary attachment combi (rolls and cones)	SP500	TM33474

Filter consumables

Description	Compatible	Code
Compact pocket filter	Atmos Compact	TP37048
Hepa Filter (Combifilter)	Atmos Nano	TP68728
Comfort Box	Atmos Duo, Mono	TP41041
Blue pre-filter mat	Atmos Duo, Mono	LFM1
White filter mat	Atmos Compact, Duo, Mono, Mistral	LFM2
20kg Carbon	Atmos Compact, Duo, Mono	LFCH20
Mistral particle filter	Atmos Mistral	TP85921

Speedy Laser Engraver

Profitability by Design



The Speedy laser engraving and cutting systems are the perfect choice both for entry level users as well as professional engravers. „Speedy“ – the fastest and most productive laser machines in the market: By processing at a maximum speed of 4.3 m/sec and acceleration of 5g the Speedy is designed to increase your production efficiency. Thanks to the closed construction, essential components are protected from dirt and dust.

This is why you can operate without virtually any maintenance and cleaning requirements. This results in higher up-time and lowest cost of ownership. All platform sizes from 610 x 305 mm up to 1016 x 610 mm are available with a CO₂, a fiber or even both laser sources in one laser system. The patented flexx function enables endless application possibilities. Use both laser sources in one job without having to change the laser source, the lenses or the focus manually.



Personalise gifts like bottles or mugs



Finest details on leather items



Engrave signs with Trotec materials

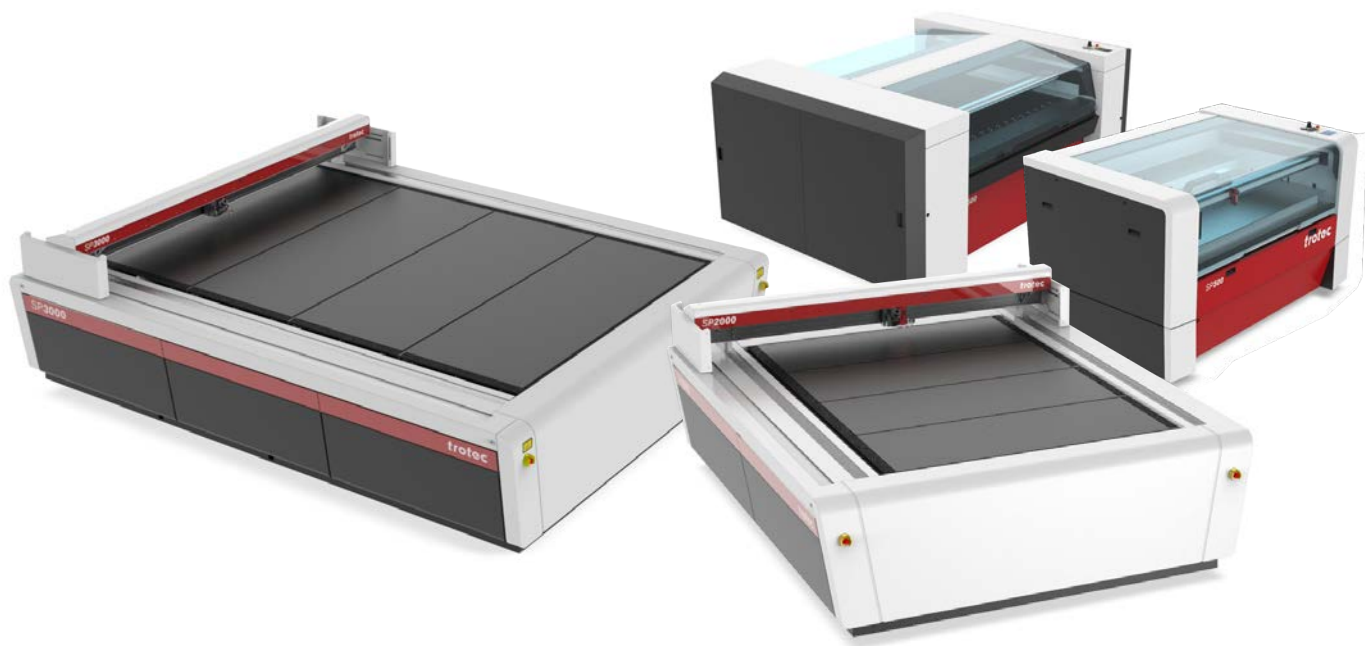
Expand your business

Speedy Laser Machines are the perfect tool for a variety of materials. Virtually any design can be realised with the laser. For example stamps can be produced within minutes and large quantity production is also significantly streamlined.

Customise honorary prizes such as awards or trophies, personalise promotional items or discover new possibilities to expand your business.

SP Series

Leading Large Format Laser Cutting



The SP Series is the right choice for large format CO₂ laser cutting systems. The highly efficient flatbed laser plotters are ideal for demanding large format cutting applications in plastics, wood, textiles and many more. Features such as highest laser cutting speed, the four-sides access and Tandem Assist ensure maximum productivity. For the SP series laser cutters Trotec developed a unique, multifunctional table concept.

The ideal table for every application can be selected and replaced easily and quickly. The working areas of SP laser cutters provide enough space for all standard sheet sizes in use today – from 1245 x 710 mm of the SP500 up to 2210 x 3.210 mm of the SP3000. Acrylics, textile, paper, cardboard or wooden sheets can be processed efficiently and cost-saving. The SP Series is 100% developed and manufactured in Austria.



Print & cut signs with unusual shapes



Flame-polished result. Cut up to 40mm acrylic.



Laser cutting of MDF furniture.
Within seconds from design to reality.

Make your production more efficient

Laser cut displays out of acrylics with flame polished cut edges without additional material finishing. Saving up to 88% of acrylics processing costs.

Whether intricate paper forms, logos or images, the results inspire with incredible detail, precision and quality. Offer new products and services and achieve more profit!

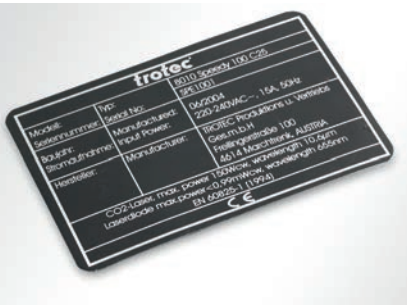
SpeedMarker Series

Created for Automation



The use of the laser markers of the SpeedMarker series leads to enormous productivity, supports automation processes and inspires by the simple handling - both in data preparation and in daily work. The laser processing cells also offer maximum flexibility in terms of size and number of components.

Especially with SpeedMarker 1300, SpeedMarker 1350 and SpeedMarker 1600, individual large or heavy components can be handled just as easily as a large number of small components in trays. Complex marking sequences are efficiently created with the SpeedMark® software thanks to visual programming and predefined program modules. The SpeedMarker series is ideal for the automation and precise marking of various plastics and metals.



Industrial tags for machines and parts



Code marking on difficult placements



Durable marks lasting a lifetime

Durable. Economical. Flexible

The use of SpeedMarker marking lasers supports automation processes. Due to the simple laser marking of dynamic data and infinite possibilities in AdvancedScripting®, the SpeedMarker series is exactly the right choice for machine manufacturing, electronic industry and job shoppers.

Individual components as well as large batch sizes are marked with a Galvo laser class 2 system for complete traceability, brand communication or with functional markings.

Terms and Conditions

All and any business undertaken by the Seller shall be subject to the terms and conditions of this Contract which are as follows:

1 Definitions

- 1.1 "Seller" means Trotec Laser Pty Ltd trading as Trotec Laser, its employees, servants, subsidiaries and associated entities.
- 1.2 "Buyer" means the purchaser, or the receiver, of any Goods provided by the Seller, or the person for whom any Services are performed for by the Buyer and extends to any company or other entity on whose behalf a person enters into this Contract.
- 1.3 "Goods" means the products and, if any, Services specified overleaf.
- 1.4 "Order" means the Order for the Goods in this Contract whether made in writing or otherwise.
- 1.5 "Services" means the provision of Goods including but not limited to, and /or any other service performed or arranged by the Seller pursuant to, or ancillary to this Contract with the Buyer.

2 General

These conditions (which shall only be waived in writing signed by the Seller) shall prevail over all conditions of the Buyer's Order to the extent of any inconsistency. The Buyer acknowledges and agrees that the terms of this contract shall apply and attach to each and every supply of Goods and Services by the Seller to the Buyer whether contained in a fresh written Order or not. For the avoidance of doubt, this contract may apply for more than one Order or transaction between the Buyer and Seller.

3 Terms of Sale and the Provision of Services

The Goods and all other Services provided and sold by the Seller are provided on these terms and conditions and the Buyer accepts the Goods and Services and the terms of this contract by conduct in agreeing to a quotation verbally or electronically or otherwise.

4 Quotation and variation in price

- 4.1 The cost of any packaging, packing materials and transportation used in relation to the Goods are at the Buyer's expense notwithstanding that such cost may have been omitted from any quotation.
- 4.2 If the Seller makes any alterations to the price of the Goods or to any of their inputs either before acceptance of or during the currency of the contract, these alterations are for the Buyer's account.
- 4.3 The descriptions, illustrations and performances contained in catalogues, price lists, websites and any other advertising material do not form part of the contract of sale of the Goods or of the description applied to the Goods.
- 4.4 The Seller reserves the right to vary any quotation at any time to reflect or accommodate any change or fluctuation in any currency exchange rate affecting or relating to the provision or supply of the Goods.

5 Variation in performance of Goods

Any performance figures given by the Seller are estimates only. The Seller is under no liability for damages for failure of the Goods provided to attain such figures unless specifically guaranteed in writing. Any such guarantees are subject to the recognised tolerances applicable to such figures.

6 Shortage

The Buyer waives any claim for shortage of any Goods delivered if a claim in respect for short delivery has not been lodged with the Seller within seven (7) days from the date of receipt of Goods by the Buyer.

7 Delivery

- 7.1 Any delivery times made known to the Buyer are estimates only and the Seller is not liable for late delivery or non-delivery.
- 7.2 The Seller is not liable for any loss, damage or delay occasioned to the Buyer or its customers arising from late or non-delivery or late provision of the Goods.

8 Loss or damage in transit

The Seller is not responsible to the Buyer or any person claiming through the Buyer for any loss or damage to Goods in transit caused by any event of any kind by any person (whether or not the Seller is legally responsible for the person who caused or contributed to that loss or damage).

9 Exclusion of Liability

- 9.1 Subject to the terms and conditions in this Contract, the Seller shall not be liable for any loss or damage suffered by the Buyer or any other person with respect to any Goods provided by the Seller.
- 9.2 The Seller will not be liable for any loss or damage suffered by the Buyer as a result of the Buyer's incorrect or negligent use of any Goods provided to the Buyer by the Seller.
- 9.3 On the Buyer's receipt of the Goods, all risk whatsoever relating to the Goods passes to the Buyer notwithstanding the provisions of clause 11 herein.

10 Buyer's Indemnity

- 10.1 If seven (7) days has passed following the Buyer taking possession of the Goods, and no claim has been made by the Buyer or notice of such claim has been received by the Seller, it is deemed that the Buyer releases the Seller from all liabilities, claims, actions, suits, causes of action or demands whatsoever directly or indirectly arising out of or in connection to the Goods or Services provided by the Seller or any representations made by the Seller regarding the Goods or Services.
- 10.2 If the Seller receives a claim of the kind mentioned in paragraph 9(a) within the seven day period, liability will only arise for the Seller in the following situations:
 - 10.2.1 Any defects have arisen solely from faulty materials or workmanship provided by the Seller; or
 - 10.2.2 The Goods have not received maltreatment, inattention or interference by the Buyer or a third party not subject to this contract.
- 10.3 The Seller is not liable for and the Buyer releases the Seller from any claims in respect of faulty or defective design of any Goods supplied unless such design has been wholly prepared by the Seller and the responsibility for any claim has been specifically accepted by the Seller in writing. In any event the Seller's liability under this paragraph is limited strictly to the replacement of any defective parts.
- 10.4 Except as provided in this contract, all express and implied warranties, guarantees and conditions under statute or general law as to merchantability, description, quality, suitability or fitness of the Goods or Services for any purpose

or as to design, assembly, installation materials or workmanship or otherwise are expressly excluded. The Seller is not liable for physical or financial injury, loss or damage or for consequential loss or damage of any kind arising out of the supply, layout, assembly, installation or operation of the Goods or arising out of the Seller's negligence or in any way whatsoever.

- 10.5 The Seller's liability for a breach of a condition or warranty implied by Division 2 of Part V of the Trade Practices Act 1974 (other than section 69) is limited to:

- 10.5.1 In the case of Goods, any one or more of the following:
 - 10.5.1.1 The replacement of the Goods or the supply of equivalent Goods; or
 - b. The repair of the Goods.
 - (ii) In the case of providing Services the supplying of the Services again.
 - (f) The seller's liability under s74H of the Trade Practices Act 1974 is expressly limited to a liability to pay to the Buyer an amount equal to:
 - (i) The cost of replacing the Goods
 - (ii) The cost of obtaining equivalent Goods or
 - (iii) The cost of having the Goods repaired, whichever is the lowest amount.
 - (g) The Buyer shall indemnify the Seller in respect of any claim, loss, damage or other outlay whatsoever or however caused whether arising directly or indirectly from any Services performed by the Seller, or in respect of any such cost incurred as a result of any breach of the terms or conditions of this Contract by the Buyer.
 - (h) The Buyer hereby exempts the Seller from all or any liability in respect of any indirect or consequential loss or damage arising from the Services performed in respect of the Goods including loss of market, loss of profit or loss of contracts howsoever caused.

11) Conditions of Payment

- (a) The Seller will charge and the Buyer will pay as per the amount quoted plus any additional costs communicated to the Buyer that are incurred in the Seller performing its Services or providing the Goods.
- (b) The final invoice rendered to the Buyer for Goods or Services provided by the Seller may vary from the initial quotation.
- (c) The Buyer is responsible for all costs incurred in respect of Goods or Services supplied or performed by the Seller.
- (d) All costs and charges for Goods or Services rendered are due and owing within seven (7) days of the Seller issuing an invoice to the Buyer unless otherwise stated on the invoice.
- (e) The Seller is entitled to retain any Goods pending full payment of an invoice, unless such other arrangements for payment have been made by the Seller and the Buyer. Such arrangements are at the Seller's absolute discretion.
- (f) Title in the Goods shall be retained by the Seller until all sums due and owing by the Buyer to the Seller are paid in full. This is notwithstanding the delivery of the Goods to the Buyer and receipt of the Goods by the Buyer and the passing of risk to the Buyer.
- (g) Until title passes to the Goods from the Seller to the Buyer following clause 11(f), the Seller reserves and retains the following rights in relation to the Goods until all accounts owed by the Buyer to the Seller are fully paid:
 - (i) Ownership of the Goods;
 - (ii) To enter the Buyer's premises, or the premises of any associated entity or agent of the Buyer where the Goods are located, without liability for trespass or any resulting damage and retake possession of the Goods when payment for the Goods is over 30 days overdue or the Buyer becomes insolvent; and
 - (iii) To keep or resell the Goods repossessed under this clause. If the Goods are re-sold, or products manufactured by the Buyer using the Goods are sold, the Buyer shall hold the proceeds of sale in a separate identifiable account as the beneficial property of the Seller and shall pay such amount to the Seller upon request. Notwithstanding the provisions in this clause, the Seller is entitled to maintain an action against the Buyer for all amounts due and the risk of the Goods shall pass to the Buyer upon delivery.
- (h) The Buyer has no right or claim to any interest in the Goods to secure any liquidated or unliquidated debt or obligation the Seller owes to the Buyer.
- (i) Interest will accrue on overdue and unpaid Buyer accounts at a rate of 1.5% per month above the Seller's Bank overdraft rate calculated on the balance of any sum owing.

12 Returned Goods

- (a) The Seller is not under any duty to accept Goods returned by the Buyer and will do so only on terms to be agreed in writing in each individual case. If the Seller agrees to accept returned Goods from the Buyer under this clause, the Buyer must return the Goods to the Seller at any place and pay any restocking fee as directed by the Seller.

13 Cancellations

- (a) The Seller reserves the right to cancel an Order at any time and for any reason at the sole discretion of the Seller and for any reason because of any event beyond the reasonable control of the Seller which alters the ability of the Seller to fulfil the terms of an Order. This includes any reason by Force Majeure, including act of God, strikes or industrial disputes, delays or inability to obtain permits consents or approvals from any authority, delay in the supply of raw materials, parts, labour or other items required to complete, any unforeseen breakdown or damage to the Seller's plant, facilities or operations, any riot or civil disturbance or any act of war, terrorism, or insurrection;
- (b) If the Seller cancels an Order, the Buyer agrees that they will not prosecute any claim whatsoever in law or in equity against the Seller.
- (c) No Order may be cancelled by the Buyer except with the consent in writing of the Seller and on terms which will indemnify the Seller against all losses.

14 Severance

Any provision of this contract which is held invalid or unenforceable in any jurisdiction will be ineffective to the extent of such invalidity or unenforceability without invalidating or rendering unenforceable the remaining provisions of this contract.

15 Place of Contract and Governing Jurisdiction

This Contract for sale of Goods is made in New South Wales and the parties submit all disputes arising between them to the Courts of New South Wales and any Court competent to hear appeals from the New South Wales Courts.

Consumable Warehouse Locations


NSW: 23B Rodeo Road Gregory Hills 2557
QLD: 2/9 Cairns Street, Loganholme, Qld 4129
VIC: 9/180 Fairbairn Road Sunshine West VIC 3020
WA: 1/40 Ledger Road Balcatta 6021
NZ: 4-6 De Leeuw Place, Hamilton NZ 3200 (Trophy Wholesalers)


Showrooms and Training Facilities


NSW: 23B Rodeo Road Gregory Hills 2557
NSW: 4/12 Channel Road Mayfield West NSW 2304 (by appointment only)
QLD: 2/9 Cairns Street, Loganholme, Qld 4129
SA: 28 Blenheim Street Adelaide 5000
VIC: 9/180 Fairbairn Road Sunshine West VIC 3020
WA: 1/40 Ledger Road Balcatta 6021
NZ: 4-6 De Leeuw Place, Hamilton NZ 3200 (Trophy Wholesalers)


T: 1300 TROTEC / +61 2 6413 5904

E: sales@troteclaser.com.au

 Troteclaseroz

 @TrotecAustralia

 @TrotecLaserAustralia

 Trotec Laser Australia / New Zealand

trotec